

# YEOVIL

## OFFICIAL TOWN GUIDE

### 2014-2015



**Compliments of Yeovil Town Council**



# MILFORD INFANTS' SCHOOL

Glenthorne Avenue, Yeovil, BA21 4PG

***“Milford Infants’ is a good school. It provides pupils with a good education and the care, support and guidance that pupils receive is outstanding and a particular strength”  
(OFSTED)***

**At Milford Infants’ School we believe:**

✓ **in recognising and valuing the contribution that each child brings to our school, and always expecting them to do their very best**

✓ **in working together to ensure that each child’s needs can be met**

✓ **in embracing the children’s natural enthusiasm and giving them a real sense of the joy of learning**

✓ **that children learn best when they feel secure**



In this happy and caring school, we can offer a highly skilled team of staff, excellent facilities and resources and a stimulating outdoor learning environment.

**For further information, or to visit our school,  
please telephone 01935 475426**

**Visit our website at:  
[www.milford-inf.somerset.sch.uk](http://www.milford-inf.somerset.sch.uk)**



**Milford Infants’ School    A Positive Start to Life-Long Learning**

# Welcome to Yeovil



Mike Lock, Mayor of Yeovil

Located on the Somerset/Dorset border, with the River Yeo running alongside it, Yeovil is surrounded by rolling hills and lush countryside.

Despite the recent economic recession, Yeovil still offers excellent employment opportunities and housing as well as highly rated health and educational facilities. Yeovil is home to AgustaWestland plc, the world's second largest helicopter manufacturer, and to Pittards plc which has a worldwide reputation for producing high quality leather goods.

The Town has many fine sporting facilities and is home to Yeovil Town Football Club, who has just enjoyed a season in the championship tier of the Football League for the first time in their history. We also host Yeovil Barbarians Rugby Club, and Yeovil Golf Club - offering the choice of playing an 18 or 9 hole course. There are many other sporting facilities available which are listed in the A-Z of sport and leisure on page 46.

For visitors with limited mobility we have Yeovil Shopmobility; a loan scheme providing motorised scooters, as well as powered and manual wheelchairs to enable people with limited mobility to shop and use other pleasure/leisure facilities in Yeovil. More details can be found on page 21.

Blue plaques can be seen on numerous historical buildings around the town and a free leaflet highlighting the location of each plaque can be found at the Town Council Offices, Tourist Information Centre and Yeovil Library.

We have a vibrant town centre, yet within minutes, you can be in tranquil surroundings in our Green Flag Award winning Yeovil Country Park. Our year round floral displays attract many compliments. In 2013 the Town won Gold for the fifth time in the South West in Bloom competition.

You can be sure of a warm welcome in Yeovil and I hope you will find this guide useful when planning your visit.

*We've been getting you there for the last 35 years*

## Radio Cabs

**FOR RELIABLE SERVICE 24 HOURS, 7 DAYS**

- ✓ LOCAL & LONG DISTANCE
- ✓ IMMEDIATE AND ADVANCED BOOKINGS TAKEN
- ✓ WHEELCHAIR ACCESSIBLE
- ✓ DOUBLE WHEELCHAIR VEHICLE
- ✓ 16 SEAT MINIBUS
- ✓ 6 & 8 SEATERS AVAILABLE

**01935 426666**

Freephone at Yeovil's Asda, Morrisons, Iceland's & Tesco

**30a Middle Street, Yeovil**

[www.yeovilradiocabs.co.uk](http://www.yeovilradiocabs.co.uk)

# Fairmead School

**Headteacher:** Mrs Diana Denman

**Address:** Mudford Road, Yeovil, Somerset, BA21 4NZ

**Website Address:** [www.fairmeadshoolsomerset.co.uk](http://www.fairmeadshoolsomerset.co.uk)

**Outreach Manager:** Mr Steve Coles **Telephone:** 01935 421295 **Fax:** 01935 410552

**Email: / Contact details:** [SCColes@educ.somerset.gov.uk](mailto:SCColes@educ.somerset.gov.uk)

**Brief description of school:** Fairmead School is situated on the North East outskirts of Yeovil in the County of Somerset. It has a very wide catchment area taking in pupils from Bruton, Chard and Somerton down and into parts of Dorset. The school, which currently has 81 students on roll, caters for students with moderate learning difficulties and complex needs, aged between four and nineteen years.



## **Working with Parents/Carers— Strategies for managing pupils with ASD**

Autistic Spectrum Disorder  
(ASD/Autism/Asperger's/TEACCH/Social  
Stories/PEC's/Sensory issues/Resources).

## **Parent and Family Support Advisor (PFSA)**

Our Parent and Family Support Advisor is available to offer advice and support for pupils and their families through the Family Links programme.

This programme offers effective ways of encouraging co-operative behaviours, empowering both parents and children. It also supports an emotional literacy programme. Target Audience: Parents of children with SEN/all key areas.

## **Using Visual Strategies with pupils with ASD in mainstream schools**

Useful classroom strategies and resources.

## **SEN in mainstream schools—providing support on teaching and assessment**

Working in collaboration with mainstream schools to support the teaching and assessment of children with SEN.

## **Awareness Session for staff on Autism Spectrum Disorder (ASD)**

ASD triad of impairment, useful classroom strategies and resources.

## **Visits to Fairmead to share good practice**

Visits by mainstream school staff to Fairmead to share good practice and knowledge/resources. This includes moderation activities.

## **Circle Time**

Providing mainstream schools with practical activities to support Circle Time.

## **Yeovil Parent Support Group**

This group is open to parents and carers of all children and young people with additional needs, whether they attend a Mainstream School, Special School or are Home Educated.

## **Behaviour strategies for individual pupils**

Fairmead can support schools in developing behaviour strategies for individual pupils and whole school systems for behaviour management. All school staff are trained in Team Teach.

## **Youth Club**

Available weekly to pupils with additional needs.



# OFFICIAL GUIDE

ISSUED BY AUTHORITY OF

## YEOVIL TOWN COUNCIL

WEBSITE: [WWW.YEOVIL.GOV.UK](http://WWW.YEOVIL.GOV.UK)

## Contents

•	Welcome to Yeovil .....	3	•
•	A Mini-History .....	6	•
•	The Town Council .....	10	•
•	Historic Plaques .....	14	•
•	Yeovil Town Team .....	15	•
•	Yeovil in Bloom .....	17	•
•	Yeovil Country Park .....	18	•
•	Chamber of Trade and Commerce .....	19	•
•	Economic Development .....	20	•
•	Yeovil Shopmobility .....	21	•
•	South Somerset Disability Forum .....	21	•
•	Yeovil Maps .....	23-25	•
•	Street Index .....	26-27	•
•	Attractions in South Somerset .....	28	•
•	Attractions in and around Yeovil .....	29	•
•	Events in and around Yeovil .....	32	•
•	Town Criers' Competition .....	33	•
•	Yeovil District Hospital .....	35	•
•	Secondary, Higher and Further Education .....	36	•
•	Fire Safety Advice .....	41	•
•	Local Information .....	42	•
•	A-Z of Sport and Leisure .....	46	•

**Acknowledgements:** The Town Council would like to thank all those who contributed to producing this Guide: Jack Sweet (Local Historian);

South Somerset District Council: Steve Fox (Principal Horticultural Officer); Katy Menday/Rachel Whaites (Countryside Manager);

Lesley Jellyman (Yeovil in Bloom Promotions Officer); David Blackwell (Leisure Projects Officer); Justine Parton (Tourist Information Centre Supervisor);

Joseph Lewis (Heritage Information Assistant); David Julian (Economic Development Manager) and Town Councillors Wes Read, David Recardo and Manny Roper for the generous use of their photographs.



## TOWN TWINNING



Town Twinning seeks to bring together the people of Yeovil  
with those in our twinned Towns.

**Yeovil is twinned with Herblay in France, Taunusstein in  
Germany and Samarate in Italy.**



Yeovil Twinning Association is a voluntary body whose aims are to promote  
exchanges of individuals and groups between Yeovil and its twin Towns giving  
those who take part the opportunity to learn more about the culture,  
language and people of another country.



**Anyone wishing to join the Association or find out more  
about Twinning should telephone 07795 913868**

COMUNE DI SAMARATE

Copyright 2014: SB Publishing, 17 Abbey Way, Willesborough, Ashford, Kent TN24 0HY  
Tel: 01233 627274 • Mobile: 07917 654492 • Email: [sbpublishing@outlook.com](mailto:sbpublishing@outlook.com)





## A Mini History

The name of Yeovil, which has had at least 70 variations of spelling, is derived from the River Yeo, dividing Somerset and Dorset at its south-eastern extent.

Evidence of early man is shown by the discovery of Bronze Age artefacts found on Wyndham Hill and Hendford Hill. There are numerous examples of Roman discoveries – Westland Road is the site of a farmstead and settlement which probably continued after Roman times until Saxon days; an excavation at Lufton revealed a Roman villa site.

The Saxons were much in evidence in the Yeovil area and a Saxon church is known to have existed by the year 950. A Saxon 'Hundred' (an administrative division of the county thought to have contained a hundred families) regularly gathered at a 'moot', or meeting, around a stone sheltered by trees at the crossroads now in Mudford Road which overlooked the whole of the domain. The moot is commemorated in the name 'The Hundred Stone' to this day and the stone can still be seen.

After the Norman Conquest, the Domesday survey of 1086 revealed 22 freemen occupying a 'tenement' or Town ship; this developed into a tiny self-governing borough, separated from the Manor of Hendford, by the twelfth century. The borough was placed under the lordship of the Rector of St John's Church with the day-to-day civil administration in the hands of a body of burgesses with a Portreeve, or Provost, at its head. At this time the centre of Yeovil became known as the Borough, which was then the market place.

In Medieval times, the Black Death, said to have reached England via Weymouth Harbour, took its toll in Yeovil; the workforce was greatly reduced and in 1348 the disease accounted for three vicars appointed between October and the following January.

In the late fourteenth century, the entire rebuilding of St John's Church took place under the direction of Robert de Sambourne, Rector of Yeovil. The building seen today – a superb example of the early perpendicular style of architecture – is much as it would have appeared soon after its completion in the early 1400s. Of particular interest is the east window depicting the Last Supper. Judas Iscariot is depicted, very unusually, with a black halo.

Yeovil was a market town from its earliest days. In 1633, Thomas Gerard wrote that the market was 'one of the greatest I have seen.' The Market House and a butcher's 'shambles' stood on much of what is now the open space in Yeovil known as the Borough. Difficult times followed financially however, as the Town along with many others was required to pay a levy to King Charles I. In addition, two devastating fires in 1623 and 1640 did tremendous damage to the small Town, causing further hardship and loss of dwellings to scores of people.

The Civil War broke out in 1642. Local hardship and resentment at the King's levy fostered support for the Earl of Bedford, who besieged the King's forces under the Marquis of Hertford in Sherborne Castle with a force of 7,000. There were several indecisive skirmishes, however whilst garrisoned in Yeovil, the Earl received news that the Marquis's troops had gathered on the hill above the entrance to the Town. The Earl mustered his forces and the Battle of Babylon Hill ensued. The Royalist forces were made to retreat back to the safety of Sherborne Castle and thus passed Yeovil's brief moment of fame in the War.

The Plague again took hold in 1645, said to have been brought in from London by people fleeing its ravages. So many of the townspeople perished that grass grew in the streets. A petition presented to Ilchester Quarter sessions in 1647 stated that ‘manie hundred souls had died’ and that no-one would undertake to bury the dead. Later that year a similar petition was presented by the Yeovil Overseers of the Poor at Wells Sessions complaining of being unable to meet the increased demands on them – not only from children and widows resulting from the plague but also because of the 1640 fire which had rendered so many homeless and impoverished. There was further resentment against being asked to contribute towards the maintenance of Cromwell’s army in Ireland.

Under Oliver Cromwell’s Commonwealth, Yeovil was not a prosperous or happy place. Many alehouses were closed, certain ‘sporting’ events were banned, neighbour watched neighbour for signs of Royalist sympathies and even church weddings were prohibited for a while.

In 1660 the restoration of the monarchy under Charles II was greeted with relief in the Town and there was a gradual return to former relaxations and prosperity as agriculture and the market flourished. A lending library was also established and there was free education for a number of children in the grammar school.



**Butchers' Shambles c1830**

The Portreeve gradually increased his responsibilities, his powers and the dignity of his office. He acquired a new mace in 1776 and it was gilded the following year. This is the mace still used on ceremonial and civic occasions by Yeovil Town Council’s Macebearer.

By the early 19th Century the bounds of Yeovil’s ancient manorial borough represented only about a third of the rapidly expanding Town, which had become famous for the gloving industry. The increased population in that third alone rendered inadequate the powers possessed by the old governing body.

In 1830, Town Commissioners were appointed under parliamentary authority for the purpose of ‘paving, lighting, watching, watering, repairing, widening and otherwise improving the streets, lanes and other public passages and places within the Town of Yeovil, and for regulating the Police thereof’. The Commissioners also built a house to accommodate their Surveyor and Police force (all three of them!) in a building in Union Street – now the Town House, which houses the present Yeovil Town Council offices and Council Chamber.

Parliamentary Reform was also in the air at this time. Civil Riots broke out in Yeovil in 1831 when the second Reform Bill was rejected and a reform candidate was defeated at Blandford. Yeomanry troops from Mudford and Martock were called out and some of the crowd were arrested and taken to the Mermaid Hotel (now



**Young People's Trust  
for the Environment -**  
creating a better future by  
inspiring young people to  
look after our world.

Free environmental  
education services for  
schools and young people.

**Find out more from [www.ypte.org.uk](http://www.ypte.org.uk)**  
**T: 01935 410173**  
Registered charity number 1153740

## A J Wakely & Sons

### Family Funeral Directors

33 Sparrow Road, Yeovil • Tel: 01935 479913

ALSO

16 Newland, Sherborne • Tel: 01935 816817

*24 hr Service, Mercedes Cortege*




**GOLDEN CHARTER**  
Pre-Paid Funeral Plans  
GUARANTEED ACCEPTANCE  
FIXED PRICE PEACE OF MIND



Yeovil's oldest public house). As a mob assembled and broke all its windows, the 3rd Dragoon Guards were called out to assist the Yeomanry and the riot was quelled. Grateful townsfolk presented commemorative jugs to officers of the local Yeomanry – three inscribed 'riot jugs' may be seen in the museum of South Somerset whilst another is held in the Mayor's Parlour at the Town House.

Special Commissioners were appointed in 1846 following increasing demands for an extension of the authority of the old corporation. This body cleared the Borough of the old Market House and shambles and commissioned the building of a new Town Hall in High Street, opened in 1849. Manorial rights acquired from the Phelps family were then passed to the Commissioners.

In 1854, the Municipal Borough of Yeovil was created by Act of Parliament, following further demands for an increase in local powers to satisfy the needs of the rapidly growing Town. The last Portreeve, Benjamin Ryall, handed over the mace and ancient borough seal into the custody of the new corporation consisting of twelve councillors with John Ryall Mayo as the first Mayor and John Batten as Town Clerk. In 1882 a chain of office was added to the Mayor's regalia.

The first Council meetings were held in the Town Hall until 1898 when a building known as the Borough House, standing back from High Street was converted for use as offices with a council chamber. This house was used by the Council until 1924 when it was pulled down for the construction of King George Street and the building of new Council Offices.

Yeovil grew rapidly in the late 19th Century, its rural and agricultural surroundings had made it the market Town for the produce of South Somerset and new municipal services included water, sewage disposal, a hospital, public baths, a cemetery, allotments, recreation grounds, public lighting and a local fire brigade. The coming of the railway had also vastly increased the Town's transport links. Yeovil had an important cattle market, was celebrated far and wide for its gloving industry and its engineering works at Petters foundry (now the AgustaWestland site) was soon to be given a tremendous boost by the dawn of the aviation age in the early 20th Century. Not many people know that the first oil engine was made in Yeovil by Petters.

In two World Wars, Yeovil played its part. Servicemen and women served in every theatre of war and many lives were sacrificed. The Town suffered many losses from sporadic enemy bombing in World War II, including its fire station, and the Westland aircraft works was a prime target. In 1919 the Borough War Memorial was erected, the scene of the Town's annual Remembrance Day Ceremony, followed later by a memorial at Preston Road and other memorial plaques in the Town.

By the 1930s Westland Aircraft of Yeovil was established as a manufacturer of military and civilian aircraft. On 3 April 1933 two Westland aircraft, designed and built in Yeovil, made the first ever flight over the summit of Mount Everest. Tensing and Hillary, the summiteers used oxygen-breathing apparatus developed by Normalair of Yeovil, then a subsidiary of Westland.



**The Riot Jug - now in the custody  
of the Town Council**

In 1935 a fire destroyed the Town Hall in High Street. A scheme to build a new Town Hall and Civic Centre at Hendford Manor House met some opposition and the outbreak of war meant it was never built (a watercolour of the architect's vision still exists, at the Town Council offices). The Law Courts were built in Petters Way in 1939, Maltravers House was constructed to house local authority and government departments in 1969 and in 1974 the Johnson Hall (now including the Octagon Theatre) was erected as a civic entertainment centre.

Post-war projects also gave Yeovil a new dual carriageway through the town centre to meet the heavy demands of motorised traffic, a new pedestrianised shopping centre with multi-storey car park, a college of further and higher education, a



purpose built police station and many new housing areas to meet its continued population growth. With the invention of the helicopter (1947), the Westland site rapidly adapted to become a supplier to national and international civil and military markets.

Local Government reorganisation in 1974 spelt the end of the old Yeovil Borough Council. Amalgamation with various local rural districts produced a new Yeovil District Council, later re-named South Somerset District Council which subsequently built new offices at Brympton Way. A municipal body of Charter Trustees with a Charter Mayor had also been formed in 1974 but in 1982, at the culmination of a long and successful campaign, the Trustees were superseded by elevation to a new Yeovil Town Council with parish status.

In 1985, Yeovil Town Council was granted the use of the armorial bearings originally obtained from the Corporation in 1954 on its 100th anniversary. In 2004, The Council celebrated 150 years of local democracy since the inception of the first Yeovil Municipal Borough and Town Mayor in 1854 and in 2012 the Council celebrated the 30th anniversary of its formation as a new town council.

The Town Council's Offices in Union Street include an illuminated museum display, which gives visitors to the Town House a free opportunity to learn more about Yeovil's fascinating history. The display changes from time to time, and arrangements have been made for an exhibition to commemorate the centenary of World War I and its impact on the Town.

Of necessity, this is a shortened version of Yeovil's history. Further details may be obtained from Yeovil Public Library (0845 345177) in King George Street, which has an extensive local history section. Another source of information is the Yeovil Archaeological and Local History Society – contact details may also be obtained from the public library. A useful section on Yeovil's history may be viewed at [www.yeoviltown.com](http://www.yeoviltown.com). For fascinating displays of Yeovil's history, a visit to the Community Heritage Access Centre is a must. Visits by appointment only – for more information telephone 01935 462855.

## Birchfield Community Primary School

Birchfield Road, Yeovil, Somerset BA21 5RL

Tel: 01935 427609

E-mail: [office@birchfield-pri.somerset.sch.uk](mailto:office@birchfield-pri.somerset.sch.uk)

Website: [www.birchfieldprimarieschool.co.uk](http://www.birchfieldprimarieschool.co.uk)

Head Teacher: Mr Richard Culham B.Ed Hons



'One school, learning together'

**We provide a happy, stimulating, safe and caring environment in which quality learning takes place and where each child is valued and encouraged to achieve their full potential.**

**We offer a creative curriculum enhanced by various clubs including**

- **Sports**
- **Art**
- **Music**
- **Breakfast Club (8 am – 8.40 am)**
- **After School Club (3.20 pm – 5.45 pm)**

**We also have the Birchfield Pre-School on our site and the Birchfield Children's Centre. Our School Hall and other rooms are available for hire.**

**For further details please visit our website or contact the Head Teacher**





## Town Council

### History

On 3 July 1854, an Act of Parliament was passed which created a municipal borough in the Town of Yeovil. Under the Act, a Burgess roll was prepared for the first municipal election of councillors to serve on the new Corporation, and the Mayoralty was established.

For over a century, the Town was administered by Yeovil Borough Council. This came to an end in 1974 when local government was re-organised and the Borough Council was abolished.

Between 1974 and 1982, Charter Trustees were elected to look after the civic interests of the Town. However, it quickly became apparent that the Town needed its own Council to look after its affairs and, after a long campaign, the Government acknowledged the case for a separate Town Council for the former Borough.

The Town Council was formed in 1982, meeting initially at Petters Way, then Preston Road and then Brympton Way. The Town House was acquired in 1989 and all meetings are now held in the Council Chamber at these premises.

In 2005, Yeovil Town Council became the first large council in Somerset to be awarded Quality Town Council status. Introduced by the Government as part of its modernising local government agenda, Quality status provides an independent assessment of local councils, and those with Quality status can be seen to be representative, competent, well managed, and able to take on an enhanced role. The Town Council has been re-accredited with this prestigious award following a further review of its performance.

In 2012 the Town Council celebrated the 30th anniversary of its formation.

Locally elected and locally funded, the Town Council provides Yeovil with a democratic structure, which serves the interests of the Town and is directly accountable to its people.



### YEOVIL & DISTRICT BRANCH

Registered Charity No 203644

Each year the Branch fosters, rehabilitates and finds loving homes for over 100 unwanted cats and kittens in the area and helps to reunite over 100 lost cats with their owners via its Lost and Found Register.

To adopt, report a stray or lost cat or volunteer to help  
Please telephone **01935 412755** and visit  
The website [www.yeovilcatsprotection.info](http://www.yeovilcatsprotection.info)

Thank you



*The Helyar Arms*

[www.helyar-arms.co.uk](http://www.helyar-arms.co.uk)



Set in one of Somerset's prettiest villages nestles the Helyar Arms of East Coker.

This 15th Century Inn will charm you from the surroundings to its food, drink & relaxing ambience. Enjoy the fresh air, great walks, peaceful bird song, fine wine & great food!

Steak Nights Monday & Thursday Evenings,  
Friday Evenings is Take Away Fish & Chips Night  
Sunday lunches from £9.50 2 courses £12.95 & 3 courses £15.00,  
Pudding Club is on last Thursday Evening of the Month

**Tel: 01935 862332**

Helyar Arms | East Coker | Yeovil | Somerset | BA22 9JR

## The Town House

The Town House was originally built in 1849 by the Town Commissioners to provide a Police Station and a residence for a “Superintendent”, who was also the Town surveyor and rate collector. Taken over by the County Constabulary in 1857, the building remained a police station until 1938.

After many years of multiple uses, Yeovil Town Council acquired the building and, after restoration and conversion, re-opened with a council meeting on the 140th anniversary of the first meeting held there by the original Town Commissioners.

The adjoining building was purchased in 1994 and converted into the Mayor's Parlour, which is situated on what was the exercise yard in front of the three police station cells. The cells still exist – though they are no longer used for their original purpose!

In recent years, the Town House has been extended to provide improved meeting facilities. These include a more spacious reception area and better access facilities for disabled persons – including a lift to the first floor, a wheelchair accessible toilet including baby changing facilities, a hearing induction loop and disabled parking provision in front of the building.

The reception is a useful source of information about what's going on in Yeovil and also has information and contact details of local voluntary and community organisations.

It also includes an illuminated museum display, which gives visitors to the Town House a free opportunity to learn more about Yeovil's fascinating history. The display changes from time to time, and arrangements have been made for an exhibition to commemorate the centenary of World War I and its impact on the Town.

Anyone wishing to learn more about the way the Town Council operates is welcome to visit the Council's Offices, which are located in Union Street, Yeovil. The Offices are open on weekdays (excluding public holidays) from 8.30am to 4.00pm.

## Yeovil Town Council Committees

The activities and responsibilities of the Town Council have grown steadily over the years, and most of its work is overseen by various Committees appointed by the Council. The powers and duties of these Committees are set out below:

### • Buildings and Civic Matters

Management of recreational and leisure facilities including a number of community halls. The Committee also oversees a variety of community safety initiatives, traffic regulation, traffic calming and the management, repair and maintenance of the Town House and public toilet facilities.



Yeovil Flower and Gardeners Market

## The Bakery West Camel (on the A303)

*Established over 100 years*

**Supplier of all bakery goods**

**Tel: 01935 850450**

SPARKFORD ROAD, WEST CAMEL,  
YEovil, SOMERSET BA22 7RB

**yph**  
waste management

- Trade, Commercial and Domestic Waste disposal
- All sizes of skips, 2-40 cubic yard, roll ons, compactors and enclosed containers
- Wait & load service
- Waste transfer facilities and self-tip
- Hazardous waste disposal and advice
- Fast delivery & collection

**For a prompt & professional service call on**

**01935 412211**

or visit our website [www.yphwaste.co.uk](http://www.yphwaste.co.uk) email: [info@yphwaste.co.uk](mailto:info@yphwaste.co.uk)

yph waste management ltd. lufton park, artillery road, yeovil, somerset ba22 8rp

An Abbey Manor Group Company

### ● Grounds and General Maintenance

Management of most of the open spaces and play areas in the Town and the management of over 300 allotment plots on a number of sites owned by the Town Council. The Committee also keeps a watching brief over the Sunningdale Doorstep Green and Yeovil Cemetery, of which the Town Council is the principal owner.

### ● Planning and Licensing

Consideration of all planning applications within the Town area; responsibility for the licensing of taxis, private hire vehicles and their drivers; street trading, street canvassing, busking and charitable collections.

### ● Policy, Resources & Finance

Dealing with matters concerning policy, resources and general finance decisions on behalf of the Town Council. Determines applications for grants from local groups and organisations, oversees personnel issues and generally advises the Town Council on corporate matters.

### ● Promotions and Activities

Overseeing the delivery of a variety of related activities, initiatives and events directly and in partnership with other stakeholders in the Town, including Yeovil in Bloom, the Annual Flower and Gardeners' Market, the Yeovil Town Team, the Town Centre Streetscene and the Christmas Lights display. The Committee is also responsible for the publication of the Town Guide and other promotional literature, customised souvenirs, the use of the Town Crest and the work of the Town Crier.

For further details about the Town Council and its Committees contact the Town Clerk on 01935 382424.

### Town Centre Initiatives

The Town Council is a member of the Yeovil Town Team, which delivers improvements in key areas using theme-based action groups. The Town Team represents the interests of local traders, local authorities, police and other stakeholders in the Town Centre.



## So much to see and do at



Yeovil Leisure Park

Yeovil Leisure is home to a superb choice of leisure & entertainment, right in the heart of Yeovil.

Why not catch one of the latest releases at Cineworld, enjoy some bowling at MFA Bowl or grab a bite to eat from Frankie and Benny's or Pizza Hut?

For those wanting to get fit and healthy, you can sweat it out at Nuffield Health.

Yeovil Leisure Park has all you need for a fun family day out in the convenience of one location.



YLP  
Yeovil Leisure Park

## Unwind in Yeovil's leading entertainment destination...

Yeovil Leisure Park | Old Station Road | Yeovil | BA20 1NP

[www.yeoleisurepark.co.uk](http://www.yeoleisurepark.co.uk) | 01935 476697





## Yeovil Youth Council

As part of a drive to encourage more young people to play a part in the democratic process, the Town Council has set up and supports the Yeovil Youth Council, which has been allocated an annual budget of £1,400 to help it achieve its aims and objectives.

These objectives are:

- Representation of all young people in Yeovil on any issue of concern to them
- Liaison with existing and new youth organisations in the Town
- Improvement of the image and status of young people in Yeovil
- Involvement in the organisation of special events for young people in Yeovil
- Seeking to further understanding between groups of young people in the Town

All the Community Schools in Yeovil and Yeovil College are represented on the Youth Council, which meets in the Town House on a monthly basis. Representatives are aged between 12 and 19 and are elected by their fellow students to serve on their behalf.

Amongst the issues discussed by the Youth Council is the provision of skate parks in the Town. Members of the Youth Council were directly involved in the design of these facilities, which have been provided to meet local demand. Their work included securing funding from Yeovil Recreation Charity for new ramps at Yew Tree Skate Park.



Yeovil Youth Council



The Square, Ilchester, BA22 8LN  
01935 840220  
[www.ilchesterarms.co.uk](http://www.ilchesterarms.co.uk)  
[mail@ilchesterarms.com](mailto:mail@ilchesterarms.com)

We have a large enclosed garden with toys, a playhouse & climbing frame.  
So why not pop in for coffee & cake & let the kids tire themselves out?!



Got a special dinner, function or party coming up? Why not take advantage of our garden room? Speak to a team member to see what we can do for you?

Got family coming to stay? Spare room not big enough? Book them in at The Ilchester Arms we have 10 en suite bedrooms & offer special discounts to locals!

Good food locally sourced & passionately cooked

- \*An extensive lunch time menu (12-2.30pm Mon-Sat)
- \*A delectable evening Bistro menu (7-9pm Mon-Sat)
- \*Traditional Sunday lunch menu (12-2.30pm)



The Youth Council has designed and distributed a survey of local young people about their shopping and leisure preferences. The results of this exercise were collated by the Youth Council and considered by the Yeovil Town Team as part of its aim to introduce new initiatives and improvements into the centre of the Town. They were also fed into the Yeovil Vision.

The Youth Council has also organised a collection of toys, which they distributed amongst children living at the Yeovil Women's Refuge and those staying at the Children's Ward at Yeovil District Hospital.

Another exciting project undertaken by the Youth Council has been the production of a Young Person's Survival Guide – listing a wide range of useful contacts on issues affecting young people. Copies of this guide have been circulated to Yeovil College and all the Community Schools in the Town. They have also received funding towards the costs of a street art project in Yeovil Town Centre and have helped to design and paint a new mural.



**Members of Yeovil Youth Council  
with David Laws MP**

## Historic Plaques

To help Yeovil celebrate the Millennium, the Town Council affixed historic “blue” plaques to a number of buildings across the Town Centre. The plaques are a fun way of learning about the past use of many of Yeovil's most famous landmarks.

Each plaque explains the historic significance of the building to which it is attached. These include Yeovil's oldest licensed premises, the Mermaid Hotel in the High Street, which is a former coaching inn and was known as “The Miremaid” in 1629.

Another property is Penn Villa in Penn Hill, which was built around 1840 and is the former residence and dental surgery of William Hunt and his son William Alfred, 19th century pioneers in the use of dental anaesthetics. The premises are still used as a dental surgery today.

More recently, an additional plaque was specially commissioned to commemorate the visit of Her Majesty the Queen and His Royal Highness the Duke of Edinburgh to Yeovil as part of the Queen's Diamond Jubilee Tour of the West Country. The plaque has been installed at Pen Mill Railway Station to mark the location of their arrival in the Town.

A free leaflet has been produced, in the form of a walking trail, highlighting the location of each plaque and giving the background to the historic connection of each building.

Copies are available from the Town Council's Offices at 19 Union Street, the Tourist Information Centre, Petters House and Yeovil Library in King George Street.

Much of the cost of producing the plaques was met by contributions from the occupiers of the buildings participating in the Scheme, with the balance being met from the Town Council's Millennium Fund and New Initiatives budget.



**Plaque at Pen Mill  
Railway Station**

# Yeovil Town Team

The Town Team is a group of local businesses and other stakeholders in Yeovil - including the Town Council - which meets regularly to consider ways of promoting and jointly funding new ideas and initiatives that will benefit the Town.

One of the Town Team's early successes was the development of a new Yeovil Town App - for use on smart phones. The App is full of free useful information about the Town - including special offers available from participating businesses under the Town Team's free Yeovil Loyalty Card. To download the app, scan the QR code here:



Other initiatives that the Town Team have developed include a successful fashion show and a food festival, and ways of encouraging shoppers to visit the Town Centre with the use of promotions and parking concessions.

The Town Team have also played an active role in developing a Town Centre community safety action group, and have established a group of stakeholders who are looking at ways of enhancing the street scene to help improve the attractiveness of the Town Centre.



nine  springs  
natural health centre

70 Hendford,  
Yeovil  
BA20 1UR

01935 422488



[www.ninespringsclinic.org](http://www.ninespringsclinic.org)

Complementary therapies  
Counselling  
Stress Management  
Regular weekly classes  
A variety of one-day workshops  
Studio and Seminar room for hire

## Community Heritage Access Centre



SSDC Lufton Depot, BA22 8RP

*Enjoy local history?  
Come and see us!*

Just book an appointment by;

**Tel: 01935 462855 or e-mail:**  
[heritage.services@southsomerset.gov.uk](mailto:heritage.services@southsomerset.gov.uk)

A warm welcome awaits you at  
**THE MUDDLED MAN**

Beer Garden • Skittle Alley

Traditional Sunday Lunch

Bar Snacks • Vegetarian

(All prepared with local produce)

Function Room Now Available

Seating up to 70, Standing up to 120

PRE-BOOKING ADVISABLE FOR MEALS  
AND FUNCTIONS

**For Enquiries Please Phone**  
**Mick, Jean or Gary on 01935 881235**

# 98% of students would recommend Yeovil College to a friend



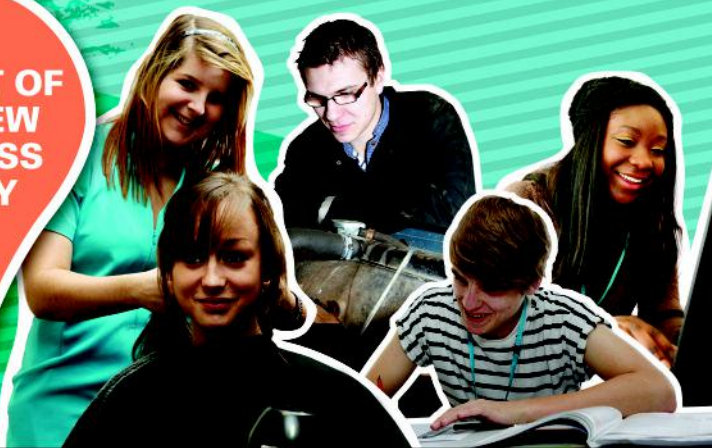
Each year more than 5000 students choose to study an extensive range of vocational, Apprenticeship and A Level courses at Yeovil College.

- Enjoy modern, innovative teaching and learning environments
- Work on real projects with the support of experienced, industry trained staff
- Choose flexible ways of learning with full, part - time and distance learning courses available
- Working with over 700 employers to ensure the best opportunities for you

With excellent progression opportunities to Higher Education and employment with our own University Centre Yeovil, offering degrees on your doorstep, there's no better place to start your journey to success than Yeovil College.



**BE PART OF  
THE NEW  
SUCCESS  
STORY**



01935 423921 | [info@yeovil.ac.uk](mailto:info@yeovil.ac.uk) | [yeovil.ac.uk](http://yeovil.ac.uk)

Join us   #offtocollege





The idea of the “Bloom” grew from Fleurissement de France, which started in 1959 and was first held in the UK in 1963.

Yeovil in Bloom was initiated and has been funded and managed by the Town Council since 1996. It was developed to enhance the visual quality of the town and bring the local community together.

The Town’s annual entry into the South West in Bloom, newly named Britain in Bloom South West, competition involves contributions from local businesses, schools, residents, and community groups. The annual displays are designed and maintained by South Somerset District Councils Horticultural Service under the direction of the Yeovil in Bloom Steering Group.

All our roundabout displays and a **million daffodils** attract visitors from all over the South West year after year.

Yeovil has won a Gold award **five** times 2005, 2008, 2009, 2010 and **2013**; this represents a fantastic effort by hundreds of people including the shops and companies in the town who sponsor hanging baskets and roundabouts.

The Royal Horticultural Society launched an “It’s your Neighbourhood Scheme” in 2001 to encourage local people to take ownership of their immediate environment. Groups get together to litter pick, create community gardens, allotments and orchards, grow and plant floral bedding displays and hanging baskets and fruit and vegetables. They raise money by organising coffee mornings and barbeques. This not only starts to create a feeling of community but also inspires more challenging projects.

If you would like more information about Yeovil in Bloom please contact, Yeovil in Bloom Promotions Officer, Lesley Jelleyman on 01935 462837.

#### **Sponsors include**

The Gardens Group  
Old Creamery Pine Warehouse  
Wakelys Funeral Directors  
Quedam Shopping Centre  
Atlas Security  
Brympton Parish Council  
Tranquility Spas  
Yarlington Housing Group



# Yeovil Country Park

## Opportunities to enjoy and conserve wildlife and countryside

Each day many people take the five minutes walk from Yeovil Town Centre, either past Penn House or the Octagon Theatre, through to the historic park of **Penn Hill**. A short stroll past Goldenstones takes you to the woodlands, waterfalls and wildlife of the lake and Valley Garden of **Ninesprings**. From here a walk along the Yeovil – Taunton old railway line takes you to **Summerhouse** and **Wyndham Hills**. These hills offer peaceful locations to admire the view. To the north, landmarks of Yeovil Town, to the east, Cadbury Castle and to the south the Dorset hills. Lastly, crossing Sherborne Road, there is a tranquil stretch called **Riverside Walk**.

These five sites, whilst retaining their individual names, are now collectively known as the Green Flag Award winning Yeovil Country Park.

## Exploring Yeovil Country Park

You can explore Yeovil Country Park on a good network of paths. There is a cycleway along the old railway line and in Ninesprings there is an Easy Access Trail with gentler gradients, improved paths and wide kissing gates. Guided walks and events take place throughout the year, and at the end of May the park is alive with attractions for the Annual Country Park May Fayre.

## Wildlife to look out for:

- Kingfishers and herons on the lake at Ninesprings
- Green and great spotted woodpeckers in the woodlands
- Badgers and roe deer in the quieter areas of Riverside Walk
- Otters along the river Yeo

Woodland plants are particularly spectacular in the spring including bluebells, primroses, wood anemones and ramsons.

## The Ranger Team

The park has a small but dedicated Ranger team. You will often see them out and about, clearing litter or carrying out projects. The rangers are incredibly knowledgeable about the site and will happily answer any questions that you may have.

## Get involved

Become a Volunteer Ranger and you can plant trees, survey wildlife, check nest boxes and get involved in any other activities. Volunteer Rangers receive training and all the equipment they need and meet every Thursday throughout the year. Alternatively join the **Friends' of Yeovil Country Park** who meet monthly to fundraise and develop projects for the country park.

## Events

**The rangers put on a diverse events programme throughout the year. For more information please check out our website (details below).**

**Contact** For further information please telephone: 01935 462462

Website: [www.southsomersetcountryside.com](http://www.southsomersetcountryside.com) or Email: [countryside@southsomerset.gov.uk](mailto:countryside@southsomerset.gov.uk)

**Find us on facebook 'Yeovil Country Park' or follow us on Twitter @SSDCCountryside**



**Friends of Yeovil Country Park at Fayre**



# Chamber of Trade and Commerce



Since 1920, Yeovil Chamber has successfully promoted commerce and business opportunities in and around the Yeovil area.

We currently represent over 160 local businesses. Size of membership ranges from self-employed individuals up to several of the largest employers in the region, with membership extending to all areas of the business sector.

We have strong ties with Chambers of other regional towns, and we are an affiliate member of Somerset Chamber.

## Benefits of Chamber membership:

- Regular networking events, to socialise and exchange ideas and opinions with other like-minded business people and their guests.
- A strong single voice to lobby for local, regional and national issues, via regular contact with local, regional and national government leaders.
- Maintaining recognition for the importance of the business community.
- Representing the concerns of your business to the people who can make change.
- Access to informed advice, and a regular online newsletter.
- A wide range of discounted member services.

...we're moving forward together.

For more information, including the facility to join online, please go to [www.yeovilchamber.org](http://www.yeovilchamber.org), or email [secretary@yeovilchamber.org](mailto:secretary@yeovilchamber.org)

<p><b>HAVING A PARTY? WHY NOT HIRE OUR SKITTLE ALLEY?</b></p> <ul style="list-style-type: none"> <li>• Barrels of Ale &amp; cider available upon request</li> <li>• Hot or cold buffets tailored to your needs</li> </ul> <p>Call in for a brochure or discuss your specific requirements with us</p>		<ul style="list-style-type: none"> <li>• <b>GREAT HOME COOKED FOOD</b></li> <li>• <b>QUIZ MACHINE</b></li> <li>• <b>JUKE BOX</b></li> <li>• <b>POOL TABLE</b></li> <li>• <b>TABLE FOOTBALL</b></li> <li>• <b>BEER GARDEN</b></li> <li>• <b>SKITTLE ALLEY</b></li> <li>• <b>LOCAL REAL ALES</b></li> </ul>
<p><b>ICE-CREAM SUNDAE MENU AVAILABLE</b></p> <ul style="list-style-type: none"> <li>'Amaretto Crunch</li> <li>'Chocolate Fudge</li> <li>'Eton Mess</li> <li>'English Berry Blast</li> <li>'Tofsee Fiasco</li> <li>'Cool Mint Choc</li> <li>'Waffle Crunch</li> </ul> <p>Question is which one to choose?!!</p>	<p><b>The Square, Ilchester, BA22 8LH 01935 840400 <a href="http://www.bullinnilchester.com">www.bullinnilchester.com</a> <a href="mailto:mail@bullinnilchester.com">mail@bullinnilchester.com</a></b></p>	
<p><b>SKY SPORTS &amp; BT SPORTS AVAILABLE</b></p> <p>All major games being shown</p>	<p><b>Build Your Own Burger!</b></p> <ol style="list-style-type: none"> <li>1. Beef, chicken or veggie burger</li> <li>2. Then choose your filling...</li> </ol> <p>'Another burger 'Cheese 'Brie 'Bacon 'Chilli Con Carne 'Jaleponos 'Fried onions 'BBQ pulled pork 'Onion Rings</p>	

# Economic Development

The next few years look set to be promising for the Yeovil Economy.

In 2013 Government funding was announced for road improvements to Yeovil's 'Western Corridor'. This will enable essential improvements to be made to the main road system between the Lysander/Bunford roundabout through to Thorne Lane. This road enhancement scheme will not only improve traffic flows at peak times and ease congestion, but it will also help bring forward some of the major employment and housing schemes planned for the western side of Yeovil. As Yeovil continues to grow this will help to ensure that a sustainable balance is maintained between the number of local jobs created and the planned housing growth for Yeovil.

Lufton Phase 3 now has all the completed access roadways and services required to attract the first new businesses to this section of the business park and the Yeovil Innovation Centre has gone from strength to strength as it generates a steady stream of new and successful businesses. Both projects will help us to create valuable investment in the Yeovil economy and help us to create more employment opportunities within the high-tech sector.

Yeovil has shown a high degree of resilience during the economic downturn and this remains the case, with the local economy proving more stable than either the regional or national economies. Yeovil remains an excellent choice for those seeking to start or expand their business or for those wishing to relocate their businesses to the area.

Further details on our projects can be obtained from the Economic Development Team. Please telephone 01935 462462.

**Tourist  
Information**

**Yeovil Tourist Information Centre**  
*We can help you with ...*

- Local and national tourist information
- Somewhere to stay – both locally and nationwide
- Ideas for things to do – days out, attractions and events discount vouchers available
- Tickets agents for:-
  - Berry's Coaches to London
  - Condor Ferries
  - National Express
  - South West Coaches daytrips
- Advance discount tickets for local events including:-
  - Royal Bath & West Show
  - Yeovilton Air Day
  - Sherborne Country Fair
  - Dorset Steam Fair
- Range of souvenirs

Open: Monday - Friday 9.00am - 4.00pm  
(All Year)

**Yeovil Tourist Information Centre,  
Petters House, Petters Way, Yeovil, Somerset BA20 1SH  
Tel : (01935) 462781  
Email : yeoviltic@southsomerset.gov.uk  
[www.discoverouthsomerset.com](http://www.discoverouthsomerset.com)**

**Alan R Farthing  
& Son**

Removals & Container Storage,  
Commercial Removals,  
Fully Alarmed,  
Piano Specialists,  
Full Packing Service,  
Part Loads,  
European Enquiries Welcome



**[www.alanrfarthing.co.uk](http://www.alanrfarthing.co.uk)**  
**Yeovil 01935 421356**  
**Mob 07801 380743**

**6 Watercombe Lane,  
Yeovil BA20 2ED**

A family  
business built on  
recommendation  
since 1928

**Partners: Alan & Robert Farthing**

## Yeovil Shopmobility



Shopmobility schemes actively encourage inclusion and equality by providing a variety of equipment, which enables people to access their local centre either independently or with family and friends. Shopmobility is for anyone young or old, whether their disability is temporary or permanent. It is available for those with injuries, long or short term disabilities – anyone who needs help with mobility. Shopmobility is about the freedom to get around and having your independence. You do not need to be registered disabled to use the service.

Yeovil Shopmobility hires out manual wheelchairs, powered chairs and powered scooters to members of the public with limited mobility, to shop and to visit leisure and commercial facilities within the town or shopping centre. Long term hire of transportable equipment is also available.

Yeovil Shopmobility is situated in the Quedam Shopping Centre Car Park.

For more information or to use the service telephone 01935 420889 or visit our website [www.yeovilshopmobility.co.uk](http://www.yeovilshopmobility.co.uk)



## South Somerset Disability Forum

Registered Charity 1091404

20 South Street, Yeovil, Somerset, BA20 1QE (upstairs via the lift)

Opening hours Tuesday – Thursday 9.30am – 2.00pm

Phone: 01935 706766

Email: [info@ssdf.org.uk](mailto:info@ssdf.org.uk)

[www.southsomersetdisabilityforum.co.uk](http://www.southsomersetdisabilityforum.co.uk)

[facebook.com/southsomersetdisabilityforum](https://facebook.com/southsomersetdisabilityforum)



The South Somerset Disability Forum actively promotes Access for All and Equal Opportunities and we challenge discrimination. We provide services such as Access Reviews for public places, Disability Awareness Workshops and Equality Training. We also hold public meetings and Coffee Mornings, sell Blue Badge parking vouchers, and produce a regular Newsletter.

We work closely with local authorities, checking that planning applications and building regulations are compliant with current regulations, as well as working with the NHS, Police and Fire Departments. Our volunteers, when trained by our training officer, complete a lot of day to day work both in the office and by going out to view public places and give recommendations. We undertake to review dropped kerbs, parking issues, accessible public transport and advise on how to improve access to public shops, services, leisure facilities and the countryside.

We always welcome newcomers whether in a group or on your own and feel that one of our roles is to help increase confidence and encourage new skills. You are welcome to join us in our work for a better quality of life for people with disabilities. We would be pleased to meet you, so please get in touch.

THE KINGSTON



VETERINARY GROUP

IN THE SOUTH WEST

## Grove Dene Veterinary Clinic



**The Forum,  
Abbey Manor Park  
Yeovil, Somerset  
BA21 3TL**

**Tel: 01935 421177**

*Surgery Times – (By Appointment Only)*

**Monday–Friday: 8.30am–12.00pm / 2.00pm–6.30pm**

**Saturday: 9.00am–12.00pm**

**“Free Registration checks for  
your pet with this advert”**

**FARM/SMALL ANIMAL/EQUINE CLINICS ALSO AT**

**Kingston House, Sherborne, DT9 3DB**

**Tel: 01935 813288**

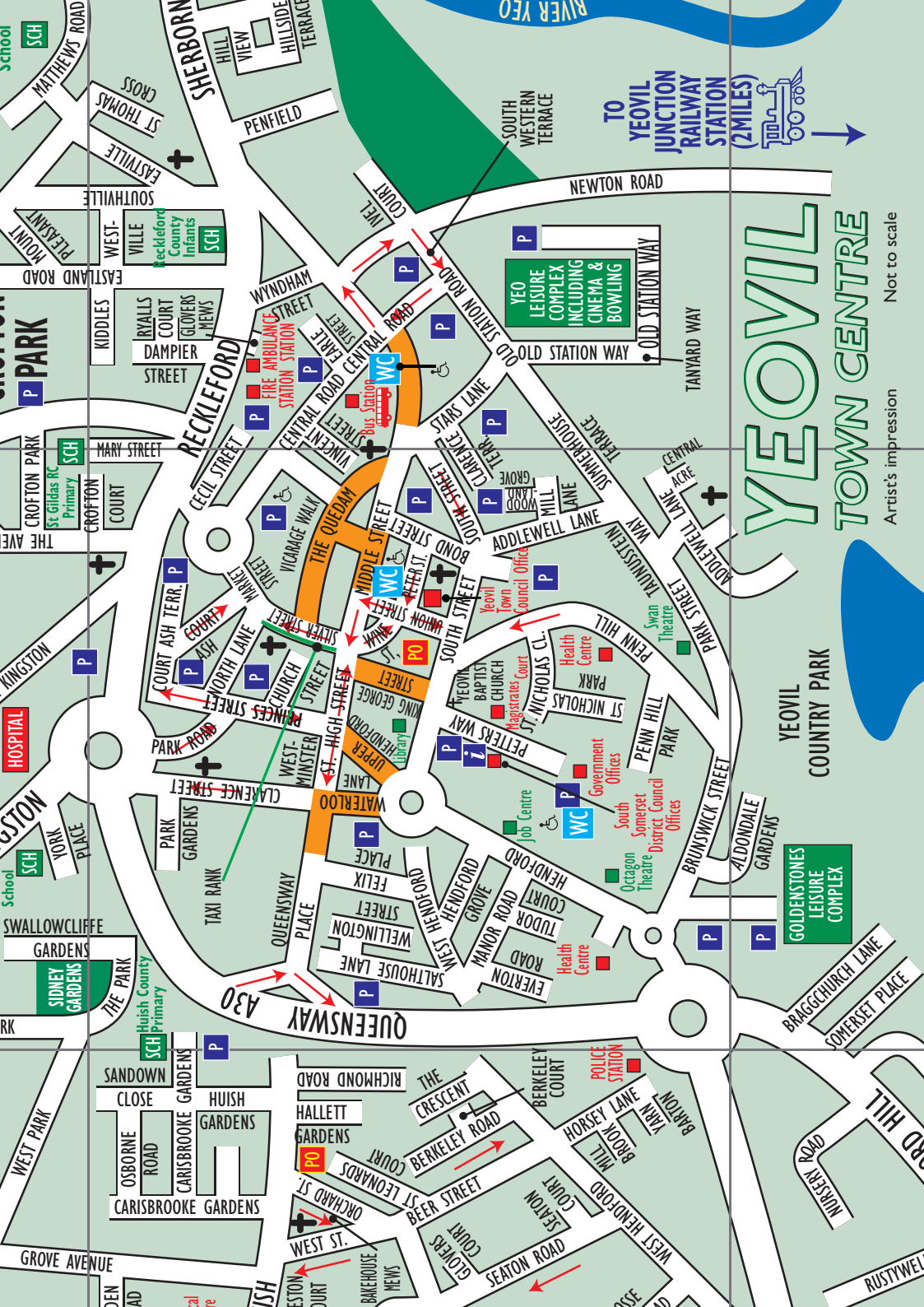
**Shave Hill Equine, Buckhorn Weston, SP8 5HY**

**Tel: 01747 822799**

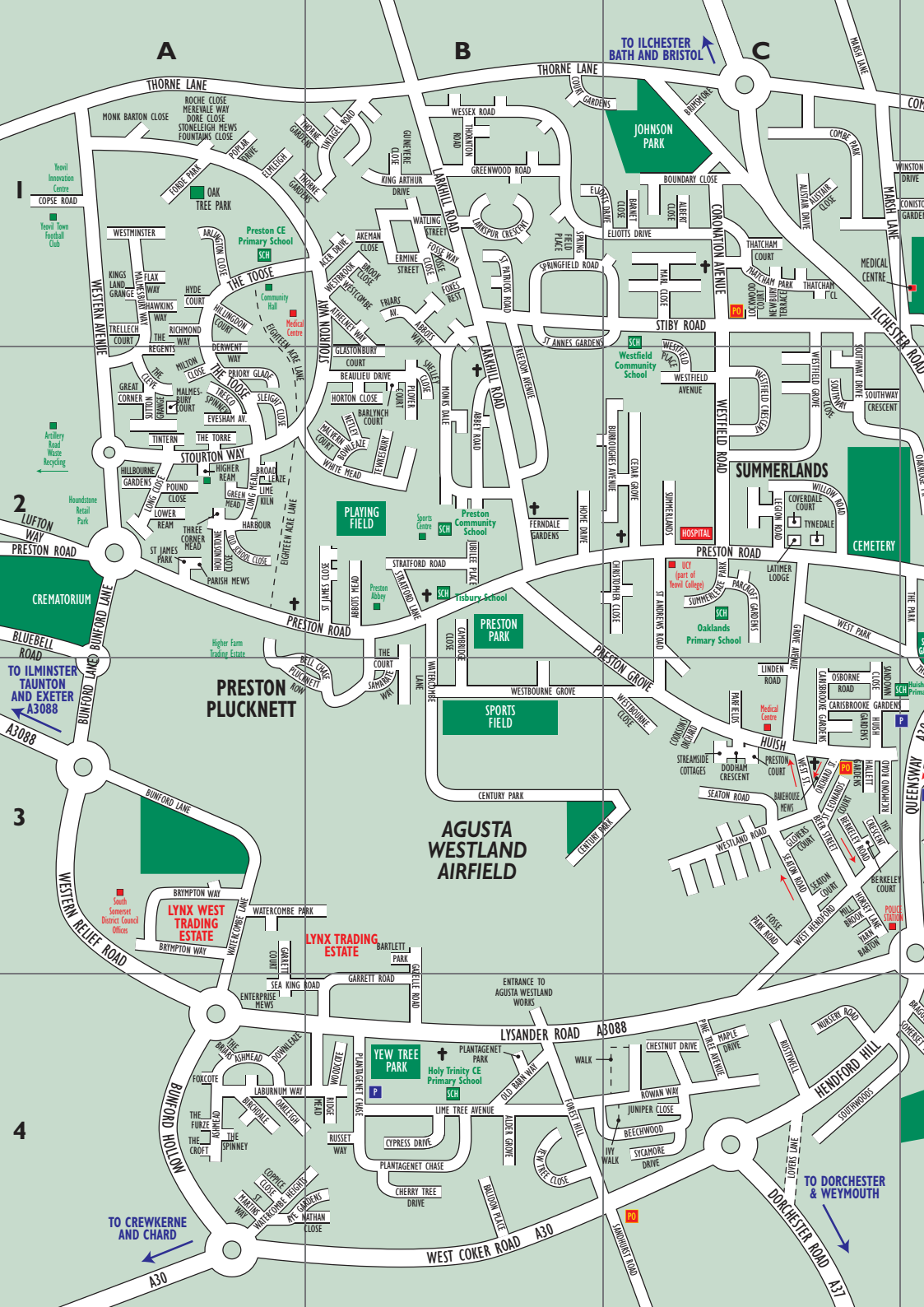
**Woodlands Equine, Longburton, DT9 5PH**

**Tel: 01935 813288**

**[www.kingstonvets.co.uk](http://www.kingstonvets.co.uk)**









# Street Index

A30	A4/B4					Hendford Grove	D3
A3088	A3					Hendford Hill	C4/D4
Abbey Road	B2					Hendford	D3
Abbotts Mead	B2					Herblay Close	F2
Abbotts Way	B1/B2					Hertford Road	F1
Acer Drive	B1	Cavalier Close	F1	Eastville	E2/E3	High Lea	D1/E1
Addewell Lane	D3/D4	Cavalier Way	F1	Eighteen Acre Lane	A1/A2	High Street	D3
Akeman Close	B1	Cecil Street	D3/E3	Eliotts Drive	B1/C1	Higher Kingston	D2/D3
Albert Close	C1	Cedar Grove	C2	Elliot Close	D2	Higher Ream Park	A2
Alder Grove	B4	Central Acre	D3	Elmhurst Avenue	E1	Highfield Road	E2
Aldondale Gardens	D3/D4	Central Road	D3/E3	Elmleigh	B2	Highland Court	D2
Alexandra Road	F2	Century Park	B3	Enterprise Mews	A4	Hill View	E3
Alistair Close	C1	Charles Road	E2/F2	Erica Close	E1/F1	Hillcrest Close	E2
Alistair Drive	C1	Charleton Close	F2/F3	Ermine Street	B1	Hillcrest Road	E2
Allingham Road	E1	Chatsworth Road	F1	Everton Road	D3	Hillingdon Court	A1
Allington Close	A1	Chelston Avenue	E1/E2	Evesham Avenue	A2	Hillbourne Gardens	A2
Arundel Road	F2	Chepstow Court	F2	Fairmead Road	E1	Hillside Terrace	E3
Ashford Grove	D1	Cherry Tree Drive	B4	Felix Place	D3	Holly Tree Walk	C4
Ashmeade	A4	Chestnut Drive	C4	Ferndale Gardens	B2	Home Drive	B2
Athelney Way	B1	Chilton Grove	D1	Fielding Road	E2	Hood Road	F1
Avon Close	E2	Christopher Close	C2	Flax Way	A1	Horsey Lane	C3
Bakehouse Mews	C3	Church Street	D3	Flushing Meadow	F3	Horton Close	B2
Balidon Place	B4	Clarence Street	D3	Folly Fields	D1	Houndstone Close	A2
Balmoral Road	F2	Clarence Terrace	D3/E3	Forde Park	A1	Howard Road	F2
Barlynch Court	B2	Clifton Close	F2	Forest Hill	B4/C4	Hudson Road	F1
Barnet Close	C1	College Green	D2	Fosse Close	B1	Huish Gardens	C3
Bartletts Park	B3	Collingwood Road	F1	Fosse Way	B1	Huish	C3/D3
Beaulieu Drive	B2	Colmer Road	D2	Fountains Close	B1	Hundred Stone Close	D1/E1
Bedford Road	F1	Combe Close	D1	Foxcote	A4	Hyde Court	A1
Beech Wood	B4/C4	Combe Gardens	D1	Foxes Rest	B1	Ilchester Road	C1/B1/B2
Beer Street	C3	Combe Park	C1	Freedom Avenue	B1/B2	Ivel Court	E3
Bell Chase	A2/B3	Combe Street Lane	C1/D1	Friars Avenue	B1	Ivy Walk	C4
Berkeley Court	C3	Coniston Gardens	D1	Frobisher Road	F1	Jellicoe Road	F1
Berkeley Road	C3	Constable Close	F1	Gainsborough Way	F1	Juniper Close	C4
Bicknell Gardens	E1	Cook Road	F1	Garrett Court	A3/A4	Kenmore Drive	D2
Birchdale	A4	Cooksons Orchard	C3	Garrett Road	B4	Kiddles	E3
Birchfield Road	E1/F1	Coppice Close	A4	Gazelle Road	B3/B4	King Arthur Drive	B1
Blenheim Road	F1	Copse Road	A1	Gilbert Road	F1	King George Street	D3
Bluebell Road	A2	Coronation Avenue	C1	Givele Close	E1	King Street	D2/E2
Bond Street	D3	Court Ash Terrace	D3	Glastonbury Court	B2	Kingsland Grange	A1
Boundary Close	C1	Court Ash	D3	Glenthorne Avenue	D1/E1	Kingston	D2
Bowlaze	B2	Court Gardens	B1/C1	Glenville Road	E2	Kingston View	D2
Braggchurch Lane	D4	Coverdale Court	C2	Glovers Court	C3	Labernum Way	A4/B4
Brimsmore	C1	Crofton Avenue	E2	Glovers Mews	E3	Larkhill Road	B1/B2
Brinsop Crescent	D1/D2/E1	Crofton Court	D2/D3	Goldcroft	D2/E2/E3	Larkspur Crescent	B1
Broad Leaze	A2	Crofton Park	D2/E2	Gordon Road	E2	Latimer Lodge	C2
Brook Close	B1	Crofton Road	D2	Grass Royal	E2	Lea Close	E1
Brunswick Street	D3	Cromwell Road	F2/F3	Great Corner	A2	Legion Road	C2
Brympton Way	A3	Cunningham Road	F1	Great Western Terrace	E3/F3	Lime Kiln	A2
Buckland Road	F2	Cyprus Drive	B4	Green Mead	A2	Lime Tree Avenue	B4
Bucklers Mead Road	E1	Dale Court	E2	Green Quarry	D2	Linden Road	C3
Bunford Hollow	A4	Dampier Street	E3	Greenhill Road	E2/F2	Lingfield Avenue	E2
Bunford Lane	A2/A3	Derwent Gardens	F2	Greenwood Road	B1	Lockwood Court	C1
Burroughes Avenue	C2	Derwent Way	A1/A2	Grove Avenue	C2/C3	Long Close	A2
Cabot Road	F1	Dodham Crescent	C3	Guinevere Close	B1	Long Mead	A2
Camborne Grove	F3	Dorchester Road	C4	Harbin Close	F3	Longcroft Road	E2
Camborne Place	F3	Dore Close	A1	Harbour	A2	Lovers Lane	C4
Camborne Street	F2/F3	Downleaze	A4	Hallett Gardens	C3	Lower Fairmead Road	E1/F1
Cambridge Close	B2/B3	Drake Road	F1	Hawkins Way	A1	Lower Ream	A2
Carisbrooke Gardens	C3/D3	Earle Street	E3	Hawthorn Road	F2	Lowther Road	F2
		Eastland Road	E2/E3	Heather Road	E1/E2		

Lufton Way	A1	Penn Hill	D3	Southway Close	C2	Thorne Lane	A1/B1/C1
Lyde Road	F1/F2/F3	Penn Hill Park	D3	Southway Crescent	C2	Thornton Road	B1
Lysander Road	A4/B4/C4/C3	Percy Road	F2	Southway Drive	C1/C2	Three Corner Mead	A2
Magna Close	F1	Peter Street	D3	Southwoods	C4/D4	Tintagel Road	B1
Malmesbury Court	A2	Peters Way	D3	Sparrow Road	D2	Tintern	A2
Malmesbury Way	A1/A2	Pickett Lane	D1/D2	Springfield Place	B1	Tower Road	E1
Malvern Court	B2	Pine Tree Avenue	C4	Springfield Road	B1/C1	Trellech Court	A1
Manor Road	D3	Plantagenet Chase	B4	St Andrews Road	C2/C3	Tresco Spinney	A2
Maple Drive	C4	Plantagenet Park	B4	St Annes Gardens	B1/B2/C1/C2	Tudor Court	D3
Market Street	D3	Plover Court	B2	St Davids Crescent	E2	Tynedale	C2
Marl Close	C1	Plucknett Row	A3/B3	St Georges Avenue	E1/E2	Union Street	D3
Marlborough Road	F2	Poplar Drive	B1	St James Close	B2	Valley Road	E2
Marsh Lane	C1	Portreeve Drive	D2/E2	St James Park	A2	Vicarage Walk	D3
Mary Street	D3/E3	Pound Close	A2	St Johns Road	E1/F1/F2	Victoria Close	F2
Mathews Road	E2	Preston Court	C3	St Leonards Court	C3	Victoria Road	F2/F3
Mayfield Road	E2/F2	Preston Grove	B2/C2/C3	St Martins Way	A4	Vincent Street	D3/E3
Meadow Road	F2	Preston Road	A2/B2/C2/D2	St Marys Crescent	E1	Watercombe Heights	A4/B4
Melrose Road	E2	Princes Street	D3	St Michaels Avenue	E1/E2/E3	Watercombe Lane	A3
Merevale Way	A1	Priory Glade	A2	St Michaels Road	E2/F2	Watercombe Park	A3/B3
Middle Street	D3/E3	Queensway Place	D3	St Nicholas Close	D3	Waterloo Lane	D3
Milford Park	E2	Queensway	D3	St Nicholas Park	D3	Welbeck Road	F2
Milford Road	D2/E2	Raleigh Road	F1	St Patricks Road	B1	Welland Road	F2
Mill Brook	C3	Reckleford	D3/E3	St Thomas Cross	E3	Wellington Street	D3
Mill Lane	D3	Richmond Road	C3	Stars Lane	E3	Wentworth Road	F2
Milton Close	A2	Richmond Way	A1	Stiby Road	B1/C1	Wessex Road	B1
Mitchelmore Road	D2	Ridge Mead	B4	Stone Lane	D1	West Coker Road	A4/B4/C4
Monk Barton Close	A1	Rivers Road	F1	Stoneleigh Mews	A1	West Hendford	C3/C4
Monks Dale	B1/B2	Roche Close	A1	Stourton Way	A2/B2/B1	West Hendford	D3
Monmouth Road	F1/F2	Roman Court	E2	Stratford Road	B2	West Park	C2/D2
Montrose Road	F2	Roping Path	D4	Streamside Cottages	C3	West Street	C3
Mountbatten Road	F1	Roping Road	D2	Summerhouse Terrace	D3/E3	Westbourne Close	C3
Mount Pleasant	E2	Rosebery Avenue	E2/F2	Summerlands	C2	Westbourne Grove	B3/C3
Mudford Road	D1/D2/E1	Rowan Way	B4/C4	Summerleaze Park	C2	Westbrook	B1
Nathan Close	B4	Runnymede Road	E1/F1	Sunningdale Road	E2	Westcombe	B1
Neathem Road	E1	Russet Way	B4	Sutton Grange	A2	Western Avenue	A1/A2
Nelson Way	F1	Rustywell	C4	Swallowcliffe Gardens	D2/D3	Western Relief Road	A3/A4
Netherton Road	F2	Ryalls Court	E3	Sycamore Drive	C4	Westfield Avenue	C2
Netley	B2	Rye Gardens	A4/B4	Sydling Road	F2	Westfield Crescent	C2
Newbury Terrace	C1	Salthouse Lane	D3	Tanyard Way	E3	Westfield Grove	C1/C2
Newton Road	E3/E4	Samarate Way	B3	Taunusstein Way	D3	Westfield Place	C1/C2
North Lane	D3	Sandhurst Road	C4	Tewkesbury	B2	Westfield Road	C1/C2
North Terrace	E2	Sandown Close	C3	Thatcham Close	C1	Westland Road	C3
Northbrook Road	E1/F1	Sandringham Road	F2	Thatcham Court	C1	Westminster Street	D3
Nursery Road	C4	Scott Road	F1	Thatcham Park	C1	Westminster	A1
Oaklands Road	F2	Sea King Road	A4/B4	The Avenue	D2/D3	Westville	E3
Oakleigh	A4	Seaton Court	C3	The Briers	A4	White Mead	A2/B2
Old Barn Way	B4	Seaton Road	C3	The Cleve	A2	Willow Road	C2
Old School Close	A2	Shackleton Road	F1	The Court	B3	Winchester Gardens	E1/E2
Old Station Road	E3	Shelley Close	B2	The Crescent	C3	Wingate Avenue	E2
Old Station Way	E3	Sherborne Road	E3/F3	The Croft	A4	Wine Street	D3
Orchard Street	C3	Sherwell Close	F1	The Furze	A4	Winston Drive	C1/D1
Osborne Road	C3	Shrewsbury Road	A1	The Hollys	E1	Woburn Road	F2
Parcroft Gardens	C2	Silver Street	D3	The Manse	E1	Woodcote	B4
Parfields	C3	Sledgemoor Close	F2	The Park	D2/D3	Woodland Grove	D3
Parish Mews	A2	Sleight Close	A2	The Quedam	D3	Woodstock Road	E1
Park Gardens	D3	Smith Terrace	E2	The Regents	A1/A2	Wyndham Street	E3
Park Road	D3	Somerset Place	D4	The Spinney	A4	Wyndham View	E3/F3
Park Street	D3/D4	South Street	D3	The Toose	A1/A2	Yarn Barton	C3
Pattinson Close	E2/F2	South Western Terrace	E3	The Torre	A2	Yew Tree Close	B4
Penfield	E3	Southville	E2/E3	Thorne Gardens	A1/B1	York Place	D2





## Attractions in South Somerset

### In and Around the Town

You will find plenty to see and explore in Yeovil on a few hours' visit for shopping and relaxation, or if you are coming as a business or leisure visitor for several days.

In the heart of the town there are large and small shops and twice-weekly markets, a multi-screen cinema and indoor bowling, swimming pools and gym facilities and a large library.

Yeovil is proud of the Green Flag winning Country Park adjoining the town centre, with woodlands and grasslands, river and lakes to enjoy - all teeming with wildlife – and a children's play area.

You will find plentiful parking in Yeovil and a good choice of places to eat and drink.

The town has an 18-hole golf course and at Yeovil Recreation Centre an athletics arena, football pitches and artificial grass pitch, tennis courts, mini-golf and pitch-and-putt. The Flagship Playspace is an exciting place for children, with tree-house walkways with rope bridges, net tunnels and climbing walls, a zipline and a large sandpit.

On the fringes of the town there is seasonal fishing, sailing and canoeing at Sutton Bingham Reservoir, the Community Heritage Access Centre with extensive local photo archive, archaeology and industrial heritage collections, and Yeovil Town Football Club – home of *The Glovers*.

Yeovil's Pen Mill railway station is on the Heart of Wessex line making it an easy trip to some of Somerset's loveliest towns – Bath, Bruton, Castle Cary and Frome - and the beautiful Dorset coast. There is a green by-pass so that you can walk or cycle off-road between Pen Mill and the town centre. Yeovil Junction Station is on the mainline between London Waterloo and Exeter.

### Further afield

Travel a little further afield to see the Fleet Air Arm Museum at Royal Naval Air Station Yeovilton, with an annual international air-show in July and nearby the Fleet Air Arm Memorial Church and military cemetery.

Haynes International Motor Museum at Sparkford has been extensively re-developed and re-launched in 2014, with new exhibition areas and conferencing and event facilities.

Less than 15 miles from Yeovil, you can discover beautiful and historic villages. East Coker (2 miles) is connected with the poet TS Eliot. At Montacute (4 miles), there is an Elizabethan house with long gallery displaying portraits from the National Portrait Gallery. Beautiful Muchelney on the Somerset Levels has an ancient abbey, pottery and idyllic riverside walking. Come here to listen to birdsong or spot an otter. This is perfect country for leisure cycling.

The friendly staff at Yeovil's Tourist Information Centre will be happy to tell you about accommodation and eating-out in the town, getting around and places to see. Visit the Centre Monday to Friday, 9am to 4pm at Petter's House, Petter's Way, Yeovil BA20 1SH or telephone 01935 462781. You will find information 24 hours a day on [www.discoversouthsomerset.com](http://www.discoversouthsomerset.com)



# Attractions in and around Yeovil

Yeovil, the major town in South Somerset, has numerous attractions to offer.

## **Barwick Park Follies**

Barwick Park has 4 follies – Jack the Treacle Eater, the Fish Tower, Messiter's Cone and the Needle. The first three can be seen from Two Tower Lane, off the A37 just south of Yeovil, and the Needle is further down the A37 at the Halstock turning.

Jack the Treacle Eater is a tall arch of rough stones surmounted by a round tower with a pointed cone roof and its entrance at the top of the arch. At the very top is a statue of Mercury recalling the servant lad, Jack, who apparently ran to London with nothing but a jar of treacle to sustain him.

The Fish Tower, 50 feet high and adjacent to Two Tower Lane. Originally this folly had a large gold-coloured weather vane, in the shape of a fish, inside an iron cage.

Messiter's Cone, 75 feet high, stands on a squat cylinder cut into three arches and has a ball as a crown.

The eyeless Needle is a stark obelisk piercing the sky.

## **Goldenstones Pools & Leisure Centre BA20 1QZ**

Goldenstones Pools and Leisure Centre is a community based sports and fitness facility set in the beautiful country park of Ninesprings.

Goldenstones provides a contemporary gym with friendly, professional staff, and a diverse group exercise class timetable to test even the fittest people. If it is more of a leisurely activity you are looking for, why not take a swim in our pool or relax in the sauna and steam room. Our experienced, dedicated staff thrive on providing a specialised, high quality service tailored to every individual.

Offering a range of pool and land based activities to suit all ages and abilities at competitive prices gives a sense of community and belonging to our customers. From Teen Gym session for children aged 14-15, to the Centre Bootcamp, to children's birthday parties, you are guaranteed to find a way to change your lifestyle at Goldenstones.

Our 25 metre, 6 lane pool, with a separate teaching pool plays host to the biggest Swim School in the region, with over 1000 swimmers participating in lessons from nursery level through to competitive training every week.

New for 2014: Looking for something to entertain your children through the school holidays? Why not let Goldenstones help, offering Trampolining, Mini Tennis, Bouncy Castle and Parachute Games and our brand new pool inflatable, there are plenty of ways for them to burn off that extra energy.

Give us a call on 01935 845888 or check out our website [www.goldenstones-leisure.co.uk](http://www.goldenstones-leisure.co.uk)

## **Ham Hill Country Park TA14 6RW**

Offering superb views of the South Somerset Moors, Exmoor and the Mendip Hills, Ham Hill Country Park has something for everyone. The Green Flag Country Park extends over an area of 400 acres, with a range of habitats to discover including wild flower meadows and mature woodlands. There are many archaeological features to explore such as Iron Age ramparts, Medieval strip lynchets, and Victorian quarries.

To learn more about Ham Hill including organised events, historical and wildlife information and to download suggested walks or free activity packs visit [www.southsomersetcountryside.com](http://www.southsomersetcountryside.com) or telephone 01935 462462.

## **Community Heritage Access Centre BA22 8RP – Access to Your Heritage**

The Community Heritage Access Centre at Lufton, Yeovil stores your heritage - objects and photographs that belong to you. We look after them on your behalf and make sure you have access to them through research visits, bookable tours and special outdoor events. Why not come along and take a look at your glass collection, your firearms, your Roman finds or your Riot Jugs? Or find out how the town centre

looked in the 1960's, and you'll find out why your neighbourhood is the way it is today. History informs the way we are today. Please use this special facility as it is for us all.

The Community Heritage Access Centre is located at 7 Artillery Road, Lufton Depot, Yeovil. Opening hours are 9am-5pm, Mondays to Fridays throughout the year. *Visits by appointment please.* Charges apply for answering enquiries and photographic reproduction for research and commercial purposes. Donations gratefully received. For further information telephone: 01935 462855.

Email: [heritage.services@southsomerset.gov.uk](mailto:heritage.services@southsomerset.gov.uk)

Website: [www.southsomersetheritage.org.uk](http://www.southsomersetheritage.org.uk)

### **Octagon Theatre BA20 1UX**

The Octagon is South Somerset's premier theatre, presenting a full programme throughout the year of drama, dance, concerts, musicals, opera and pantomime. It has a popular Café/Bar, Prelude, and licensed bars. All facilities are fully accessible to the disabled and there is an infra-red system for the hard of hearing. For information, bookings and/or to join the free mailing list, telephone 01935 422884 or visit our website: [www.octagon-theatre.co.uk](http://www.octagon-theatre.co.uk)

### **Swan Theatre BA20 1QT**

This small and intimate theatre on Yeovil's Park Street is owned and run by the Swan Theatre Company for staging its own productions and those of other local amateur groups. Visit our website at [www.swan-theatre.co.uk](http://www.swan-theatre.co.uk) or telephone 01935 428646 or box office 07500 376031.

### **Yeovil Country Park BA20 1QZ**

Yeovil Country Park incorporates Ninesprings, Wyndham Hill, Summerhouse Hill, Penn Hill and the Riverside Walk. Situated just off Yeovil's Town Centre and easily accessed from Goldenstones Leisure Centre car park.

The Ninesprings area of the Park consists of 40 acres of wooded valleys, open parkland, grottos, springs, streams, waterfalls and lakes. Ideal for strolling through, Ninesprings also has a fully equipped children's play area. Telephone (01935) 462462 or visit [www.southsomersetcountryside.com](http://www.southsomersetcountryside.com).

### **Yeovil Golf Club BA21 5BW**

This 18-hole course has fantastic views and is situated off the A30 to the East of the Town. There is also a 9 hole pay and play course. Telephone (01935) 422965.

### **Yeovil Town Football Club BA22 8YF**

Football fans are welcome to Huish Park stadium to watch our nationally famous Yeovil Town Football Club in action. Telephone 01935 423662 for fixture information or go to [www.ytfc.net](http://www.ytfc.net).



### **Yeovil Recreation Centre and Athletics Arena BA21 4AW**

The top outdoor sport and recreation venue in South Somerset. From a relaxing picnic on the wide open spaces to an adventure on the Flagship Playspace you can spend all day at the Rec.

Whilst you're here why not have a round of Golf on the Pitch & Putt or Mini Golf course? If that's all too much, take a break and relax with some refreshments from our Galley kiosk.

For young adventurers the exciting Flagship Play space has used the ideas of local young people to create an amazing play space including tree house walkways, a shipwreck, skull and snake themed tunnel slides and a zipline.

We also have a top class Artificial Grass Pitch and Athletics Arena which are available to book.

To find out more about the Rec, including up to date opening times, visit [www.facebook.com/YeovilRec](http://www.facebook.com/YeovilRec) or call 01935 462616.

### **Yeo Leisure Park BA20 1NP**

Multiplex cinema, ten-pin bowling, health and fitness suite. Located in Old Station Road, just off the Town Centre.

### **Jungle, Jungle BA22 8RP**

Specially designed children's indoor activity centre and play area at Artillery Road, Lufton, Yeovil. Telephone 01935 433833 or visit [www.junglejungle.co.uk](http://www.junglejungle.co.uk).

### **Rug Ratz BA21 3AR**

Children's indoor play centre in the Abbey Hill industrial estate. Telephone 01935 476989.

### **Milford Hall BA21 4QD**

Modern refurbished hall and meeting room available for community use. Telephone 01935 382424 or e-mail [ytic@yeovil.gov.uk](mailto:ytic@yeovil.gov.uk) for details.

### **Monmouth Hall BA21 5NP**

Hall situated off Monmouth Road, available for community use. Telephone 01935 382424 or e-mail [ytic@yeovil.gov.uk](mailto:ytic@yeovil.gov.uk) for details.

### **St Michael's Hall BA21 5AG**

A refurbished popular venue for soft play and trampoline parties. Also extensively used for gymnastics and trampoline coaching. Please contact Goldenstones Leisure Centre on 01935 845888 for details.

### **Milford Adventure Playground and Skate Park BA21 4QD**

Children's adventure play area incorporating skate park and multi-use games area. Newly improved.

### **Yew Tree Adventure Playground and Skate Park BA20 2PY**

The play area, which is located off Lysander Road/Forest Hill, has been extensively refurbished and now includes a timber fort, aerial zip wire, wigwams, extra high slide and buddy swing. There is also a skate park and basketball area.

## **St Michael's Academy** *catering for children in Year 3 – 6*

**01935 423863 • [www.stmichaelsacademy.co.uk](http://www.stmichaelsacademy.co.uk)**

St Michael's Academy, Grass Royal, Yeovil, Somerset, BA21 4JW



Every child who joins us is an individual, and we strive to provide an education which not only ensures good academic outcomes but also prepares our youngsters for later life. We are very proud that as well as good results at the end of Key Stage 2 our pupils leave us fully prepared for the next stage of their education. They are well rounded, with good levels of self-confidence and ready to take on the challenges that lie ahead.

It is our aim that all pupils are supported in order to achieve their full potential in an environment which is nurturing and supportive while at the same time exciting and challenging.

If you are looking for a warm and friendly school where pupils are supported in order to achieve their full potential, then come and visit us.

Come and see for yourself on one of our open days; 30th September and 1st October (2014 & 2015)

"The school is well led and managed at all levels, with governors successfully supporting the principal's outstanding vision and decisive leadership. The opening of the school as an academy has been particularly well managed."

*Ofsted report, June 2013*

# Events in and around Yeovil

Weekly Markets (**Tuesdays & Fridays**)

Farmers' Market (**4th Saturday of the month**)

Aldon Horse Trials (**March**)

Mini Marathon (**March**)

Yeovil Beer Festival (**April**)

Town Criers' Competition (**April**)

Abbey Hill Steam Rally (**May**)

Lufton Manor Summer Fete (**May**)

Yeovil Country Park May Fayre (**May**)

Royal Bath and West Show (**May**)

Yeovilton Air Day (**July**)

Somerset Steam Spectacular (**July**)

SomerZest (**August**)

Ham Hill Country Park Heritage Trail (**September**)

Yeovil Flower and Gardeners' Market (**September**)

Buskfest (**September**)

Somerset Arts Week (**September**)

Truckfest (**September**)

Yeovil Literary Festival (**September**)

Sherborne Literary Festival (**October**)

Yeovil Lions Fireworks Spectacular (**November**)

Yeovil Christmas Lights Switch On (**November**)

Lower Middle Street, Yeovil

Middle Street, Yeovil

Aldon, Yeovil

Around Yeovil

Yeovil College

The Public Entertainments Area, Yeovil

Yeovil Showground, Barwick Park

Lufton, Yeovil

Ninesprings, Yeovil

Showground, Shepton Mallet

Fleet Air Arm Museum, nr. Ilchester

Low Ham, Langport

Octagon Theatre, Yeovil

Ham Hill, Stoke Sub Hamdon

Middle Street, Yeovil

Town Centre, Yeovil

All over Somerset

Yeovil Showground

In and around Yeovil

In and around Sherborne

Yeovil Showground

Town Centre, Yeovil

This is only a small sample of local periodic events. Full details of these may be obtained from the Tourist Information Centre, Petters House, Petters Way, Yeovil 01935 462781.

**Details of local events are available on [www.yeoviltown.com](http://www.yeoviltown.com)**







## Town Criers' Competition

Town Criers from far and wide come to Yeovil each year to keep up the ancient tradition of Crying and compete in the Annual Town Criers Open Competition. All are members of the Ancient and Honourable Guild and enjoy a fantastic day as guests of Yeovil Town Council providing a colourful and warm spectacle to entertain shoppers throughout the day as each competitor performs their home town Cry and a Cry of their own choice in the Public Entertainment Area in the presence of the Mayor and Mayoress.

In April 2014 the 20th Anniversary of the Town Criers competition was celebrated and two Town Criers attended the event who were at the very first competition in 1994.

The formal system of Town Criers dates back to the Middle Ages, when a reliable and trusted person with a clear, loud voice was required to keep citizens informed of matters of national and local importance. The historical significance of the Town Crier is greatly valued and is celebrated at this event, which brings colleagues together from all over the country.



### SWAN THEATRE

The Swan Theatre is one of the great little theatres of the South West. The Swan Theatre

Company presents 6 plays each year for 6-night runs. Plays include comedy, costume & serious drama. The Swan is run entirely by volunteers who are committed to maintaining its high standards and to extending a warm welcome to new members and audiences.

*Other local theatre groups  
also perform at the the venue.*

#### SWAN THEATRE

138 Park Street, Yeovil BA20 1QT

Email: [swantheatreboxoffice@gmail.com](mailto:swantheatreboxoffice@gmail.com)

Website: [www.swan-theatre.co.uk](http://www.swan-theatre.co.uk)

Telephone: 07500 376 031

## T.P.Awards

*Proprietor T.E. Broad*

4 Victoria Avenue, Chard, Somerset TA20 1HE

Tel: 01460 65596

or find us at [www.tpawards.co.uk](http://www.tpawards.co.uk)

E-mail [tpawards@btconnect.com](mailto:tpawards@btconnect.com)



*Trophies Supplied &  
Engraved*



*Glassware Supplied &  
Engraved*



**MISSING ADVERTISING IN THIS  
GUIDE & WANT TO ADVERTISE  
IN THE NEXT ONE?**

Contact us on **01233 627274**

or

**07917 654492**

Email us at  
**[sbpublishing@outlook.com](mailto:sbpublishing@outlook.com)**





## Enjoy the premium experience for less than you think at Yeovil Audi.



Yeovil Audi delivers an experience as prestigious as the vehicles we sell. As the only Audi approved Centre in the Somerset and Dorchester area, we are proud to represent the Audi brand.

- ▶ New cars
- ▶ Approved used cars
- ▶ Servicing and parts
- ▶ Dedicated sales team
- ▶ Audi trained technicians

**We have something for everyone.**  
**Visit the showroom or [yeovilaudi.co.uk](http://yeovilaudi.co.uk) for more.**

### **Yeovil Audi**

Mead Avenue, Houndstone Business Park, Yeovil, Somerset BA22 8RT 01935 411808  
[yeovilaudi.co.uk](http://yeovilaudi.co.uk)

# Yeovil District Hospital

Yeovil District Hospital **NHS**  
NHS Foundation Trust

Yeovil District Hospital is a high performing general hospital with 345 beds providing services including accident and emergency, intensive care, maternity, paediatrics, surgery, outpatients and therapies.

The Trust also has a private patients' facility, the Kingston Wing, which offers single en-suite rooms with a personal service in state-of-the-art clinical facilities.

Each year, we see around 20,000 emergency admissions, 3,500 elective admissions, and 18,000 day cases. Around 46,000 people attend our accident and emergency department each year and around 2,000 babies are delivered in our maternity unit. Our intensive care unit looks after hundreds of people every year. In total we serve a population of around 185,000 people every year.

Yeovil Hospital has its own registered charity and all the donations we receive are used to improve our facilities. As part of our Flying Colours Appeal, Yeovil Hospital Charity is currently fundraising for a new Special Care Baby Unit with more modern facilities and more space for families. If you would like to donate or help raise funds for your local hospital, please contact [sarah.cherry@ydh.nhs.uk](mailto:sarah.cherry@ydh.nhs.uk) or call us on 01935 383020.

To find out more about the hospital go to [www.yeovillhospital.nhs.uk](http://www.yeovillhospital.nhs.uk)



**FLEET AIR ARM  
MUSEUM**

The thrill is being there

See the Aircraft Carrier Experience and Concorde  
RNAS Yeovilton,  
Somerset, BA22 8HT  
01935 840565  
[fleetairarm.com](http://fleetairarm.com)

THE NATIONAL  
MUSEUM

**CBS  
COMPLETE BOILER SPARES**

**Suppliers of Boilers, Heating & Boiler Spares,  
Oil, Gas & LPG, Domestic & Commercial**

**Also spares for Gas Fires  
Gas Cookers & AGA/Rayburns**

Thousands of parts in stock for all the  
major manufacturers.

We aim to supply next day if stock items  
or within 2/3 days for non stock items.

**Yeovil Branch:** Unit 22 Bartlett Court, Sea King Rd,  
Lynx Trading Estate, Yeovil, Somerset BA20 2NZ

**T. 01935 433 755  
F. 01935 477 705**

**E. [yeovil@cbslimited.co.uk](mailto:yeovil@cbslimited.co.uk)  
W. [www.cbslimited.co.uk](http://www.cbslimited.co.uk)**

# Secondary, Higher and Further Education

## BUCKLER'S MEAD ACADEMY

Buckler's Mead Academy recently celebrated its 55th Anniversary and is looking forward to the next 55 years from a position of great strength and with ambitious plans.



### Top for Progress

In 2013 we were the top 11-16 school or academy in Somerset for the progress our students make, from when they arrive to when they leave the academy. We have also been named as the 60th Most Improved School in England for our results 2011 – 2013. We have had a series of very positive OFSTED reports with Inspectors commenting on “many outstanding features .... Care, guidance and support of the students are outstanding .... Behaviour is good, Leadership and management are good..... Excellent and well-targeted support for all students.” Two additional single subject/theme OFSTED inspections have both resulted in “outstanding” judgements!

### Investors in People

At Buckler's Mead we have a deeply founded belief that by appointing top quality staff and training and supporting them fully we are able to provide the very best education for our students. We are a seven times' Investor in People – unique in Somerset – and are very proud of the quality of our staff and what they do for the students.

### Premises update

We've invested almost £1.5 million in our premises in the last two years, with improved access, full double glazing, enhanced ICT facilities, new toilets, more study areas and an extended entrance. We are looking forward to starting the next phase this summer.

### Sports Development Project

We have almost completed our £2million Sports Development Project in association with the English FA, who wish Buckler's Mead to become a “Centre of Excellence”. This started in October 2009 when a fantastic new floodlit all weather pitch was opened, with subsequent phases of the project including multi surface play areas, new fitness studio, new pitches etc. Our link with the English FA provides a Centre of Excellence, not just for football but for sport in the Yeovil area.

All in all, Buckler's Mead continues to grow and develop. Already highly successful, we have ambitious plans for future progress. You are cordially invited to become part of that success story.

**Sara Gorrod, Headteacher**

## THE PARK SCHOOL – Fulfilling your child's potential

*“The provision for children's welfare is outstanding” – ISI Inspection*

The Park School remains rooted in its Christian foundation with traditional values of care and excellence and a creative, modern approach. We offer exceptional opportunities for girls and boys, ages 3 – 18, day or boarding from age 8.

Children in our expanding ‘Saplings’ from the age of 3 thrive in our happy, purposeful environment where they can embark on a learning journey of adventure, exploration and fun.

At The Park School children are encouraged to enquire, think independently, take on responsibilities and





We teach the traditional subjects favoured by Universities, with 100% pass rate at A-level for the eighth year running.

Pastoral care is a real strength and borders regard themselves as part of our happy, extended family.

We would be very happy to show you around or arrange a 'taster day' for your child.

For more information please visit [www.parkschool.com](http://www.parkschool.com)

*"Our hopes and expectations have been far exceeded" – Parent*

We look forward to welcoming you.

**Jane Huntington - Headteacher**

## PRESTON SCHOOL – A Business & Enterprise Academy

Preston School is a highly successful 11-16 Specialist Business and Enterprise Academy, judged by Ofsted (April 2012) as a good school with outstanding features.

Our values are simple and clear. The most important person is the learner, who is central to all that happens. To achieve our motto 'Excellence for all', it is crucial for the learning process to be active, fun and adapted to suit all learners. The curriculum needs to be relevant to each individual and the outcomes from their time here must prepare them for life beyond the school.



## Goldenstones Leisure Centre

## Facilities

### Contemporary gym with membership journey

*Diverse Group Exercise programme*

*Sauna / steam room*

Swimming pool / learner pool

Swim school

### Birthday parties

### Children's holiday activities

*Friendly staff*

### Regular events

*Great membership offers at competitive prices...*

**Give us a call on 01935 845888  
or check out our website  
[www.ledleisure.co.uk](http://www.ledleisure.co.uk)**



# TOTAL BUZZ TRAINING

- \*Trailer towing training
- \*LGV and PCV Tuition
- \*Test Preparation or confidence building
- \*Vast Experience
- \*Excellent Pass Rates
- \*Our vehicle or yours

**01935 891651**

**07815 121548**

email: [steve@totalbuzzevents.com](mailto:steve@totalbuzzevents.com)  
address: Tweentwo Cottage, Halstock, Yeovil, BA22 9RJ



As a Business & Enterprise Specialist Academy we have a special remit, to develop and share best practice in business and enterprise learning. Our curriculum and the associated learning experiences support the local economy in the following ways:-

- Supporting business productivity
- Encouraging new enterprise
- Delivering skills for the economy
- Competing in a global market
- Promoting innovation

To learn more about Preston School please visit our website ([www.prestonschool.co.uk](http://www.prestonschool.co.uk)). Alternatively, please come and visit us – you will be made most welcome!

**Tony Bloxham, Principal**

### **WESTFIELD ACADEMY**

At Westfield Academy, we see the qualities in each and every child. We want to ensure that all our students are happy and supported to fulfil their potential.



We are also determined to be at the heart of the community, so that we can provide a really outstanding all-round education for young people in Yeovil and the surrounding villages.

#### **“A rapidly improving school”**

Described by Ofsted as “a rapidly improving school”, we occupy a green and attractive site where parents know that their children will be well looked after and encouraged to be the best they can be. We have an excellent record of academic achievement and a wide-ranging curriculum that provides opportunities for all students.

#### **New developments**

In the past few years, Westfield Academy has undertaken a process of rapid development that is already bringing enormous benefits to our students and the wider community. In the past year we have built a new music suite (comprising rehearsal rooms, recording studio and a Media suite), a dance studio, fully-refurbished sports hall and new catering facilities. We also benefited from Olympic funding in 2013 that has financed the development of a brand new floodlit and all-weather multi-use sports facility. Funding has also just been agreed for a floodlit, astro turf pitch, opening in Autumn 2014.

#### **A broad education**

Westfield is well-known for its wide-ranging and high quality extra-curricular programme. We strongly believe in providing a broad education for our students, which includes activity additional to the curriculum, including sport, outdoor activities and creative arts. Students also have the opportunity to take part in a wide range of activities and school trips which complement the curriculum including Barcelona Art Trip, Ski Trip, France and Chesil Beach. Last year, we have also launched our ‘International Links’ Programme, which will offer students the fantastic opportunity to take part in visits to our partner schools in India and China.

#### **Supportive learning environment**

We provide a supportive learning environment, with clear expectations of good behaviour and mutual respect. We want students to do well and achieve at the highest possible level, so that they are fully prepared for life after school.

We are very proud of Westfield and would encourage you to come and visit us. Our students and staff would be very pleased to show you around and answer any questions you may have.

For more information visit our website: [www.westfieldacademy.co.uk](http://www.westfieldacademy.co.uk) or call 01935 423 747.

**Chris Hunt, Principal**

## YEOVIL COLLEGE

### Join the New Success Story...

A new era has begun at Yeovil College, the area's biggest provider of Apprenticeships and Further and Higher Education courses. With the arrival of new principal, John Evans, the College is entering a new phase of development and progress which will see it reassert itself as the destination of choice for people of all ages.



### Over 5000 Students can't be wrong!

Already, more than 5000 students choose to study at Yeovil College and the University Centre Yeovil each year, completing a wide range of qualifications which will help them progress towards success in their chosen careers. From introductory courses to Master's degrees, Yeovil College can offer something for everyone, providing the whole community with relevant and valuable personal development opportunities.

### Develop the Skills Employers Really Want

Working with over 700 regional, national and international employers and the local community, Yeovil College constantly reviews its courses, regularly introducing new qualifications, including Apprenticeships, A Levels, vocational courses, degrees and professional training. As a result, at Yeovil College you can gain the skills and personal attributes you will need in your future career.

### An Inspiring Place to Learn and Grow

Students are supported by an enthusiastic and dedicated team of teaching and support staff, all focussed on working for students so that they can achieve their goals. As well as a professional and highly qualified lecturing staff, the College can boast an award-winning Student Support team. The College is proud to have accreditations including Healthy FE College status, the Department of Health's 'You're Welcome' award and the Buttle UK quality mark.



THE  
**FORESTER'S  
ARMS**  
**BAR & KITCHEN**

01935 863118  
@ForestersHW



### **Modern, Professional Learning Environment**

Recent developments including the Leonardo Building for Art, Media, Graphic Design, Photography and Engineering, the Nexus Hair and Beauty salons, Da Vinci Restaurant extension and A Level Academy are just the beginning. With the creation of a brand new Construction Skills Centre and an enrichment centre, which joins other communal areas such as the Renaissance Refectory, Yeovil College is continuing its ongoing programme of improvements to learner resources and facilities.

### **98% of Students Recommend Yeovil College**

So what are you waiting for? Find the right course for you at [www.yeovil.ac.uk](http://www.yeovil.ac.uk).

**John Evans, Principal**

### **UNIVERSITY CENTRE YEOVIL**

The University Centre Yeovil has been Yeovil's only dedicated provider of Higher Education for more than 10 years. In that time, more than 3000 people have graduated from the University Centre with the skills and knowledge they need to make a valuable contribution to both the community and the economy and have a successful working life. At its campus on Preston Road, students take a wide range of high quality courses, including Honours degrees, HNDs, Higher Apprenticeships, industry-standard professional qualifications and Master's degrees. The friendly and supportive learning environment means students excel and achieve excellent results that stand them in good stead for the future.

Find out more at [www.ucy.ac.uk](http://www.ucy.ac.uk).





# Fire Safety Advice

- Imagine waking up to the smell of smoke
- Imagine seeing your home filling with thick black clouds
- Imagine seeing flames destroying your possessions and blocking your escape

**You can prevent most fires in the home by being aware of the dangers that will help you avoid the risks of a fire starting.**

If you feel that you would like some more advice or if you feel you have specific risks within your property call us on 0800 7311 822 to talk about the possibility of a home safety visit by Devon and Somerset Fire and Rescue Service personnel.

**Remember, if a fire breaks out in your home  
always get out, stay out, and call 999**

## *The Mermaid* Hotel & Restaurant

Situated in the heart of Yeovil, the Mermaid Hotel offers old world charm combined with every modern facility. Originally a fifteenth century coaching inn, The Mermaid Hotel retains its character, especially in the spacious bars & split level restaurant.

**14 comfortable bedrooms** all centrally heated, with colour television & refreshment facilities.

Our attractive licensed **restaurant** in Yeovil offers A la carte menus with an excellent selection of hot or cold snacks & meals, readily available in our open plan bar. Our Carvery is freshly cooked & served daily from 12 - 2.30pm. We have live music every Saturday & karaoke every thursday

The Mermaid Hotel, Yeovil is situated in the heart of **Somerset**, ideal for holidays in Somerset area.

**High Street, Yeovil, Somerset BA20 1RE**

**T: 01935 423151**

**F: 01935 473137**

**E: [info@mermaidhotelyeovil.co.uk](mailto:info@mermaidhotelyeovil.co.uk)**

**W: [www.mermaidhotelyeovil.co.uk](http://www.mermaidhotelyeovil.co.uk)**

**PLAY UNLIMITED  
GOLF Over 27 HOLES  
at YEOVIL GOLF CLUB**

**£16**  
...for  
**NO MORE THAN\***  
**PER WEEK**

**playing on our...**  
**18 holes - Old Course**  
**9 holes - Newton Course**

**For more information on all our Membership  
Packages, Contact us on 01935 422 965**

**...visit us at [YEOVILGOLFCLUB.COM](http://YEOVILGOLFCLUB.COM)**

\* TERMS AND CONDITIONS MAY APPLY



## Local Information

### AMBULANCE SERVICE

Non-Emergency	111
Emergency	999

### ANIMAL WELFARE RSPCA

(24 hrs.)	0300 1234999
-----------	--------------

### BANKS

Santander	
17 Vicarage Street	0845 7654321
Barclays	
King George Street	0845 7555555
TSB	
King George St	01935 475588
Halifax	
King George Street	01935 640108
Lloyds	
9 High Street	0845 3000000
HSBC	
1 Middle Street	0845 7404404
Natwest	
2 Hendford	0845 6002803
Nationwide	
36 Middle Street	0845 2660420

### CHAMBER OF TRADE AND COMMERCE

5 Coronation Avenue	
Secretary, Gina Farnborough	01935 804 999

### CHEMISTS

Abbey Pharmacy	
The Forum, Abbey Manor Park	01935 478243
Boots	
37 Middle Street	01935 426673

John Preddy Co Ltd	
Preston Grove	01935 433971
Day Lewis Pharmacy	
72 Hendford	01935 423393
Penn Hill Pharmacy	
9 South Street	01935 706604
Co-operative Pharmacy	
67 St John's Road	01935 421768
Superdrug Stores plc	
15 High Street	01935 422829

### CHURCHES & RELIGIOUS DENOMINATIONS

#### *Baptist*

Yeovil Baptist Church	
South Street	01935 434404

#### *Church of England*

St John's Church	
Town Centre	01935 427745
St James Church	
Preston Road	01935 414097
St Peter Church	
Coronation Avenue	01935 429398
Yeovil Community Church	
The Gateway	
Addlewell Lane	01935 433146
Holy Trinity Church	
Lysander Road	01935 415266
United Reformed Church	
Princes Street	01935 411302

#### *Roman Catholic*

Church of the Holy Ghost	
Higher Kingdon	01935 423549

### **Methodist Church**

Vicarage Street 01935 432173

### **Other**

The Church of Jesus Christ of Latter  
Day Saints, Forest Hill 01935 426817  
Elim Pentecostal Church  
Southville 01935 429214  
Jehovah's Witness  
Kingdom Hall, Eastland Road 01935 431902  
South Somerset Muslim Cultural  
Association and Yeovil Mosque,  
Westminster Street 01935 412685

### **CINEMA**

Cineworld  
Advance Booking 0871 200 2000

### **CITIZENS' ADVICE BUREAU**

See Welfare

### **CEMETERY**

01935 423742

### **CREMATORIUM**

01935 476718

### **ELECTRICITY**

(Emergencies)  
Western Power Distribution 0800 365900  
Southern Electric Power Distribution  
08000 727282

### **FIRE SERVICE**

Reckleford 01935 382000  
Emergency 999

### **FLOODLINE**

0845 9881188

### **GAS SERVICE**

Emergencies 0800 111999

### **EDUCATION**

#### **Primary (Age range 4-11 years)**

Birchfield 01935 427609  
St Michaels's Academy 01935 423863  
Holy Trinity C of E 01935 472902

**Mike Manning**  
the Sound & Vision Experts!  
**Audio**  
[www.mikemanningaudio.com](http://www.mikemanningaudio.com)  
for the VERY BEST in . . .

- HiFi Separates
- Home Cinema, TV & Projectors
- Custom Installation, Multi Room
- iPod & iPad Docks and Systems
- Personal and Portable Audio
- Wide range of cables and accessories

We also offer a video-tape & film to DVD copying service.

Serving Music And Movie Lovers in Somerset Since 1988  
and remember...Experience Counts!

**BVRLA**  
Quality Assured

**Vincent**  
Rental

**SIXT**

**01935 433433**



**Cars, Vans & Trucks**  
[www.vincentrental.co.uk](http://www.vincentrental.co.uk)

**united**  
rental

Like us on Facebook

Huish	01935 474984
Milford Infants	01935 475426
Milford Junior	01935 474477
Preston C of E	01935 474538
Reckleford Infant & Nursery	01935 475938
St Gildas RC	01935 423630

### ***Secondary Schools***

Bucklers Mead Academy	01935 424454
Preston Academy	01935 471131
Westfield Academy	01935 423747

### ***Special Schools/ Special Needs Centre***

Fairmead	01935 421295
Fiveways	01935 476227

### ***Further and Higher Education***

Lufton Manor College	01935 403120
Yeovil College	01935 423921
University Centre Yeovil	01935 845454

### ***Independent***

Park School	01935 423514
-------------	--------------

## **GOVERNMENT DEPARTMENTS**

Local Offices	
Jobcentre Plus	
Federated House, Hendford	0845 6043719
Registrar of Births, Deaths and Marriages, Maltravers House	
Petters Way	01935 411230
HM Revenue & Customs	0845 0109000
Valuation Office Agency	
Quantock House, Paul Street	
Taunton	01823 308200
VAT Enquiries	0300 2003700

## **GUEST HOUSES/HOTELS**

Details available from the Tourist Information Centre	01935 462781
----------------------------------------------------------	--------------

<b>HOUSING (Social Rented)</b>	01935 462462
--------------------------------	--------------

## **HEALTH CENTRES, HOSPITALS AND CLINICS**

NHS Direct	111
Hendford Lodge Medical Centre	01935 470200
Penn Hill Surgery	
St Nicholas Close	01935 470800
Preston Grove Medical Centre	01935 474353
Yeovil District Hospital	
Higher Kingston	01935 475122
Yeovil Health Centre (Boots) 37 Middle Street	01935 709269

## **LAW COURTS**

County Court, Hendford	01935 382150
Magistrates Court, Petter's Way	01935 426281

## **LIBRARIES**

Yeovil Library	
King George Street	0845 3459177
Sunningdale Branch Library	
Monmouth Road	0845 3459177
Music & Drama Library	
King George Street	01935 472020
Reference Library	
King George Street	0845 3459177

## **MARKETS**

### ***General:***

Lower Middle Street (Tuesdays and Fridays)	07973725913
-----------------------------------------------	-------------

### ***Farmers:***

Upper Middle Street (4th Saturday of the month)	
<a href="http://www.somersetfarmersmarkets.co.uk/markets/yeovil">www.somersetfarmersmarkets.co.uk/markets/yeovil</a>	



**Flagship Play Area Picnic**



## **MEMBER OF PARLIAMENT**

David Laws MP  
Liberal Democrat Office  
5 Church Street 01935 423284

## **MUSEUM OF SOUTH SOMERSET**

Community Heritage  
Access Centre  
By Appointment 01935 462855

## **POLICE**

Avon & Somerset Constabulary  
Somerset East District  
Horsey Lane 101  
Emergency 999  
Neighbourhood Watch 101

## **POST OFFICE**

Delivery/Sorting Office  
103 Huish 0845 57740740  
Enquiries 0845 722 3344

## **SOUTH SOMERSET DISTRICT COUNCIL**

Council Offices  
Brympton Way 01935 462462

## **SOUTH SOMERSET DISABILITY FORUM**

20 South Street 01935 706766

## **SWIMMING POOL**

Goldenstones Pools and  
Leisure Centre,  
Brunswick Street 01935 845888

## **THEATRES**

Octagon Theatre  
(Box Office) 01935 422884  
Swan Theatre, Park Street  
(Box Office) 07500 376031

## **TOURIST INFORMATION CENTRE**

01935 462781

## **VOLUNTEERS**

South Somerset Association for Voluntary  
& Community Action SSVCA  
(Community Transport)  
Yeovil Business Centre 01935 475914  
Houndstone  
(Voluntary Sector Support) 01935 475914  
Petter's House, Petter's Way

## **WATER**

Emergencies 0845 600 4600

## **WELFARE SERVICES & ADVICE CENTRES**

Citizens' Advice Bureau  
40-42 Hendford 01935 421167  
Age UK 0800 169 87 87  
Somerset Skills & Learning  
Dolphin House,  
21 Henford 01935 420067  
Samaritans  
24 Hour Service 0845 790 9090  
Yeovil Children's Centre 01935 848942

**YEOVIL SHOPMOBILITY** 01935 420889

## **YEOVIL TOWN COUNCIL**

Town House, 19 Union Street, BA20 1PQ  
Town Clerk – Alan Tawse 01935 382424



**The Octagon Theatre**

# A-Z of Sport & Leisure

## ATHLETICS:

Yeovil Olympiads Athletics Club: 01935 433388

## BADMINTON:

Aerosystems Badminton Club: 01935 443095

Wessex Wanderers Badminton Club: 01935 415315

Yeovil Shuttlebusters: 07890 902005

Yeovil Westlands Badminton Club: 01935 705260

Shuttlebusters Badminton Club: 0789092005

## BASKETBALL:

Yeovil Jets Basketball Club: 07850766909

## BOWLS AND BOWLING:

East Coker Short Mat Bowls Club: 01935 864174

Odcombe Short Mat Bowls Club: 01935 862861

Yeovil Bowls and Squash Club: 01935 474142

## BOXING:

Yeovil Amateur Boxing Club: 01935 479794

## CANOEING:

Sutton Bingham Canoe Club: secretary@sbd.cc

## CRICKET:

Hardington and West Coker: 01935 445310

Westlands Sports Cricket Club: 07970111928

## CYCLING:

Blackmore Vale and Yeo Valley

Cyclists Touring Club: 01258 821233

Yeovil Cycling Club: 01935 434026

## DANCE:

Helen Laxton School of Dance: 01935 863865

Yeovil Sequence Dance Club: 01935 415520

## DISABLED SPORTS:

Yeovil Apollo Swimming Club: 01935 479992

## FOOTBALL:

Lufton College of FE: 01935 403120

Westlands Sports FC: 07977102799

Yeovil-Normalair RSL FC: 01935 420254

## GYMNASTICS:

Jumping Beans Pre School Gym Club: 01935 429012

Orchard Gymnastics: 01935 425682

## HEALTH WALKS

Abbey Manor Walking Group: 07717 893749

Yeovil Health Walks: 07812 049678

## HOCKEY:

Yeovil and Sherborne Hockey Club: 01749 813301



## MARTIAL ARTS:

Panthers Martial Arts Academy: 01935 426753

Somerset Karate: 01935 428286

Yokai Karate Do: 01935 423749

Yeovil Judokai: 01935 420638

Yeovil Tae Kwon Do: 07851538458

## NETBALL:

Stanchester Netball Club: 01935 825430

## RUGBY:

Ivel Barbarians Rugby Club: 01935 432052

## RUNNING:

Yeovil Town Road Running Club: 07728161164

## SAILING:

Sutton Bingham Sailing Club: 01935 862933

## SQUASH:

Westlands Squash Club: 07976517088

## SWIMMING:

Yeovil and District Swimming Club: 07738445309

## TABLE TENNIS:

Westlands Table Tennis Club: 01935 479669

## TENNIS:

Yeovil Tennis Club: 01935 389868

## TOWN TWINNING:

Secretary: 07795 913868

## VOLLEYBALL:

Yeovil Volleyball Club: 01935 479603

## CLUBS AND SOCIETIES

Yeovil has a wealth of Clubs, Societies, Organisations, Society and Community Associations and Support Groups and much has been omitted from this guide due to lack of space. Full details can be obtained from the SSVCA (01935 475914), Yeovil Library (0845 345 9177) or South Somerset District Council (01935 462462).



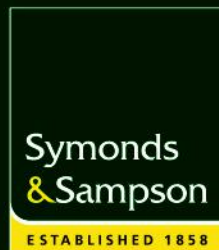
For an **ever changing** market...

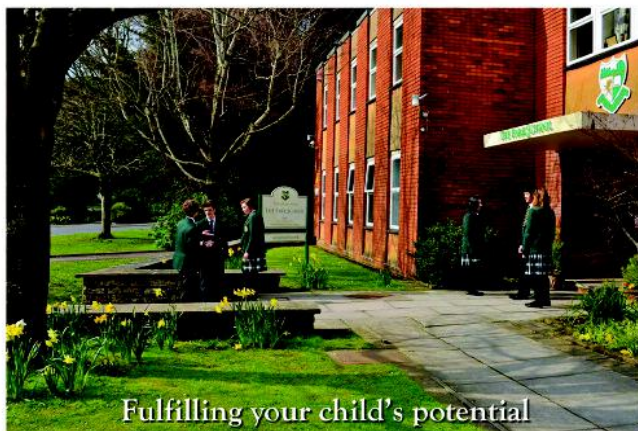
**Are you unsure about which way to turn?**

For an expert view on any property matter, speak to one of our experienced teams to see how we can help.

<b>Yeovil Office</b>	<b>01935 423526</b>
<b>Sales</b>	Stephen Hennessey
<b>Lettings</b>	Karen Mitchell
<b>Professional</b>	Simon Clothier

**[www.symondsandsampson.co.uk](http://www.symondsandsampson.co.uk)**





Fulfilling your child's potential



# THE PARK SCHOOL

*"The provision for children's welfare is outstanding" - ISI Inspection*



Exceptional  
opportunities for  
girls and boys,  
day and boarding,  
ages 3 - 18



The Park School, Yeovil, Somerset, BA20 1DH Tel: 01935 423514  
www.parkschool.com admin@parkschool.com

